

Technique Essentials

Tenor Saxophone

① ♩ = 120 - 140

mf *mf*

mf *mf*

mf *mf*

mf *f*

②

mf *mf*

mf *mf*

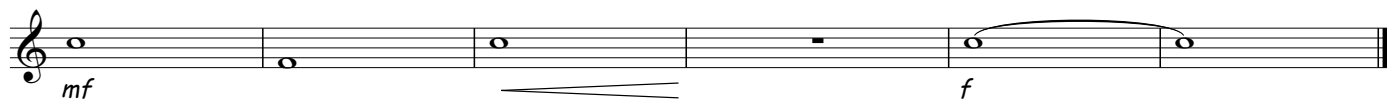
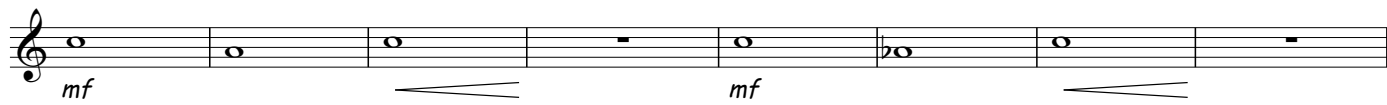
mf *f*

③

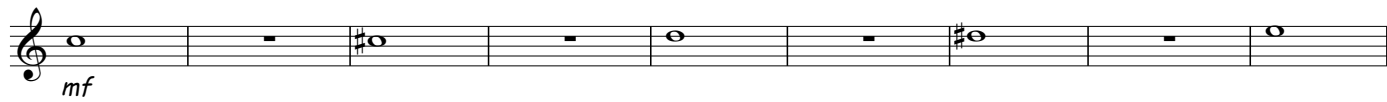
mf *mf*

Tenor Saxophone
XtremeTechnique Warm Up

Composed By: Wayne R. Downey



④



⑤

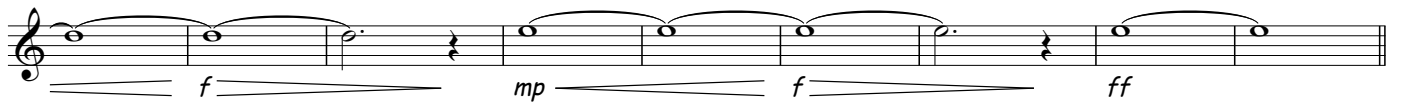
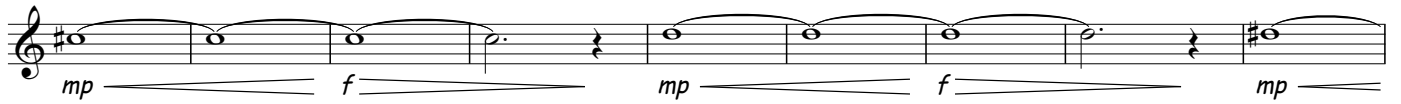


Tenor Saxophone
XtremeTechnique Warm Up

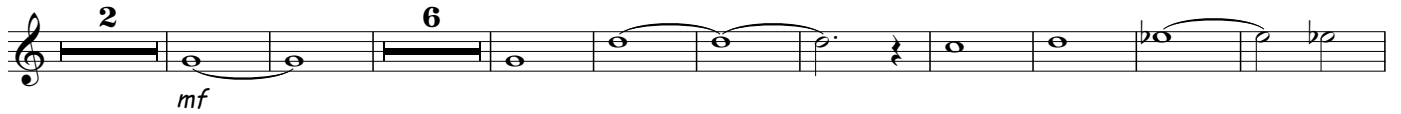
Composed By: Wayne R. Downey



⑥



⑦



⑧ ♩ = 140 - 160



⑨



Tenor Saxophone
XtremeTechnique Warm Up

Composed By: Wayne R. Downey

ff

10

f-ff