

Orchestra Sequence Packet

Cello

Exercises 1-20

The purpose of this packet is to organize and add supplemental information to exercises that exist in published material. This is not a substitute for purchase of the materials contained herein. In order to be compliant with copyright law, all students using this packet must purchase the following materials:

Suzuki Cello School, Volume 1 (Alfred Publishing)

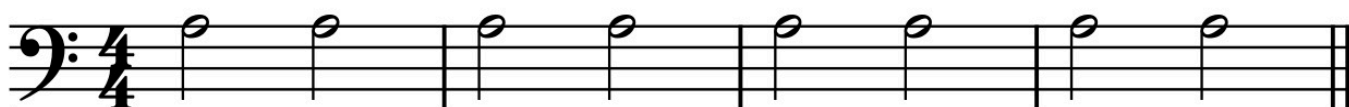
Purchase Link - https://www.amazon.com/Suzuki-Cello-School-Vol-Revised/dp/0874874793/ref=sr_1_1?s=books&ie=UTF8&qid=1506092288&sr=1-1&keywords=suzuki+cello+book+1

Essentials for Strings, Cello - Gerald Anderson (Kjos Publishing)

Purchase Link - https://www.amazon.com/74CO-Essentials-Strings-Gerald-Anderson/dp/0849732042/ref=sr_1_1?s=books&ie=UTF8&qid=1506092357&sr=1-1&keywords=essentials+for+strings+cello

Cello Assignment #1

Bowing on the A string



Metronome Setting

60

Tuning Note(s)

None

Grading Criteria

star 1	Ears, Stomach, Calf, and Knee (Cello is in the correct position)
star 2	Bow hold: keep the right hand round and relaxed
star 3	Bow hold: keep the thumb bent and in the correct position
star 4	Bow travels in a straight line on the string
star 5	Bow stays halfway between the bridge and fingerboard

Resource Links:

For clickable resource links, please visit www.emmsmusic.com/orch-music-mastery/

Cello Assignment #2

Bowing on the D string



Metronome Setting

60

Tuning Note(s)

None

Grading Criteria

star 1	Change the bow direction in time with the metronome
star 2	Bow hold: keep the thumb bent and in the correct position
star 3	Sitting Posture is balanced, with weight on both feet
star 4	Sound is consistent without wobbling
star 5	Bow stays halfway between the bridge and fingerboard

Resource Links:

For clickable resource links, please visit www.emmsmusic.com/orch-music-mastery/

Cello Assignment #3

Bowing on the G string



Metronome Setting

60

Tuning Note(s)

None

Grading Criteria

star 1	Change the bow direction in time with the metronome
star 2	Bow hold: keep the thumb bent and in the correct position
star 3	Sitting Posture is balanced, with weight on both feet
star 4	Correct arm weight creates a resonant, consistent tone
star 5	Bow stays halfway between the bridge and fingerboard

Resource Links:

For clickable resource links, please visit www.emmsmusic.com/orch-music-mastery/

Cello Assignment #4

Bowing on the C string



Metronome Setting

60

Tuning Note(s)

None

Grading Criteria

star 1	Change the bow direction in time with the metronome
star 2	Bow hold: keep the thumb bent and in the correct position
star 3	Sitting Posture is balanced, with weight on both feet
star 4	Correct arm weight creates a resonant, consistent tone
star 5	Bow moves straight and stays in the middle lane

Resource Links:

For clickable resource links, please visit www.emmsmusic.com/orch-music-mastery/

Cello Assignment #5

A-string Articulation



Metronome Setting

60

Tuning Note(s)

None

Grading Criteria

star 1	Change the bow direction in time with the metronome
star 2	Bow hold: keep the thumb and pinky bent in the correct position
star 3	Ears, Stomach, Calf, and Knee (Cello is in the correct position)
star 4	Weight is placed in the string prior to articulation
star 5	Weight is lifted as the bow moves, sounding a clean articulation

Resource Links:

For clickable resource links, please visit www.emmsmusic.com/orch-music-mastery/

Cello Assignment #6

D-string Articulation



Metronome Setting

80

Tuning Note(s)

None

Grading Criteria

star 1	Change the bow direction in time with the metronome
star 2	Bow hold: keep the thumb bent and in the correct position
star 3	Sitting Posture is balanced, with weight on both feet
star 4	Measures 1,3 are played legato
star 5	Measures 2,4 are played staccato

Resource Links:

For clickable resource links, please visit www.emmsmusic.com/orch-music-mastery/

Cello Assignment #7

Suzuki Bk. 1 p.12, Exercise for proper D-string posture and changing strings

Use a short bow stroke.

Exercises for Changing Strings

Change string quickly here.

Metronome Setting

80

Tuning Note(s)

none

Grading Criteria

star 1	Change the bow direction in time with the metronome
star 2	Bow hold: keep the thumb bent and in the correct position
star 3	Sitting Posture is balanced, with weight on both feet
star 4	Legato bows are played correctly
star 5	Staccato bows are played correctly

Resource Links:

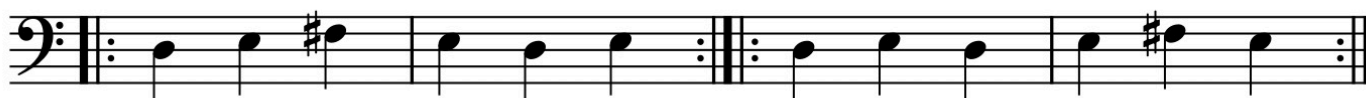
For clickable resource links, please visit www.emmsmusic.com/orch-music-mastery/

Cello Assignment #8

D-string Tuning



5



Metronome Setting

60

Grading Criteria

Tuning Note(s)

D4

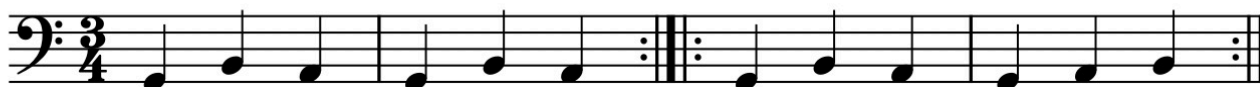
star 1	Change the bow direction in time with the metronome
star 2	Bow hold: keep the thumb bent and in the correct position
star 3	LH: Thumb is behind the 2nd finger, fingertips on the string
star 4	'E's are in tune with the tuning note
star 5	'F#'s are in tune with the tuning note

Resource Links:

For clickable resource links, please visit www.emmsmusic.com/orch-music-mastery/

Cello Assignment #9

G-string Tuning



5



Metronome Setting

60

Tuning Note(s)

G4

Grading Criteria

star 1	Change the bow direction in time with the metronome
star 2	Bow hold: keep the thumb bent and in the correct position
star 3	LH: Thumb is behind the 2nd finger, round hand shape
star 4	'A's are in tune with the tuning note
star 5	'B's are in tune with the tuning note

Resource Links:

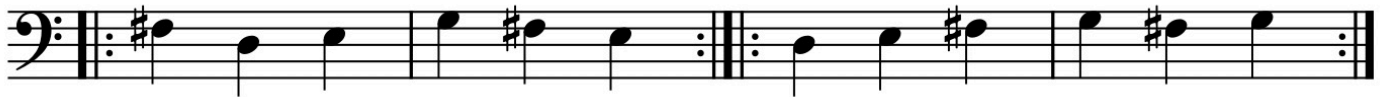
For clickable resource links, please visit www.emmsmusic.com/orch-music-mastery/

Cello Assignment #10

D-string Tuning



5



Metronome Setting

60

Tuning Note(s)

D4

Grading Criteria

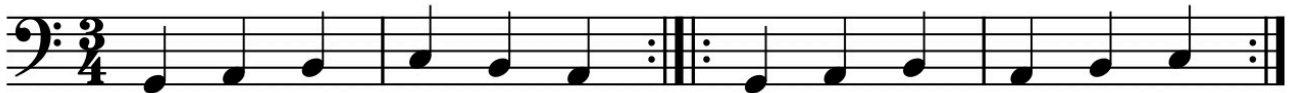
star 1	Change the bow direction in time with the metronome
star 2	Correct sitting posture, cello position, hand shape
star 3	'E's are in tune with the tuning note
star 4	'F#'s are in tune with the tuning note
star 5	'G's are in tune with the tuning note

Resource Links:

For clickable resource links, please visit www.emmsmusic.com/orch-music-mastery/

Cello Assignment #11

G-string Tuning



Metronome Setting

60

Grading Criteria

Tuning Note(s)

G4

star 1	Change the bow direction in time with the metronome
star 2	Correct sitting posture, cello position, hand shape
star 3	'A's are in tune with the tuning note
star 4	'B's are in tune with the tuning note
star 5	'C's are in tune with the tuning note

Resource Links:

For clickable resource links, please visit www.emmsmusic.com/orch-music-mastery/

Cello Assignment #12

Suzuki Bk. 1 p.13, Exercise for quick placement of fingers

Place fingers 1,2,3,4 quickly and accurately during the rests.

Metronome Setting

80

Tuning Note(s)

D3

Grading Criteria

star 1	Change the bow direction in time with the metronome
star 2	LH: Thumb is behind the 2nd finger, round hand shape
star 3	'E's are in tune with the tuning note
star 4	'F#'s are in tune with the tuning note
star 5	'G's are in tune with the tuning note

Resource Links:

For clickable resource links, please visit www.emmsmusic.com/orch-music-mastery/

Cello Assignment #13

Suzuki Bk. 1 #1 - Twinkle, Twinkle Little Star - Var. A

Metronome Setting

80

Tuning Note(s)

D3

Grading Criteria

star 1	Bow stays halfway between the bridge and fingerboard
star 2	Sitting Posture is balanced, with weight on both feet
star 3	'E's and 'B's are in tune with the tuning note
star 4	'F#'s are in tune with the tuning note
star 5	'G's are in tune with the tuning note

Resource Links:

For clickable resource links, please visit www.emmsmusic.com/orch-music-mastery/

Cello Assignment #14

Suzuki Bk. 1 #1 - Twinkle, Twinkle Little Star - Var. B



Metronome Setting

80

Tuning Note(s)

D3

Grading Criteria

star 1	Bow hold: keep the thumb bent and in the correct position
star 2	LH: Thumb is behind the 2nd finger, round hand shape
star 3	Move the bow in the right direction in time with Metronome
star 4	1st and 4th finger notes are played in tune
star 5	3rd finger notes are played in tune

Resource Links:

For clickable resource links, please visit www.emmsmusic.com/orch-music-mastery/

Cello Assignment #15

Suzuki Bk. 1 #1 - Twinkle, Twinkle Little Star - Var. C



3

Fine



5



7

D.C. al Fine



Metronome Setting

80

Tuning Note(s)

D3

Grading Criteria

star 1	Left hand is curved, with the fingertip touching the string
star 2	Each articulation is in time with the metronome beat
star 3	'E's and 'B's are in tune with the tuning note
star 4	'F#'s are in tune with the tuning note
star 5	'G's are in tune with the tuning note

Resource Links:

For clickable resource links, please visit www.emmsmusic.com/orch-music-mastery/

Cello Assignment #16

Suzuki Bk. 1 #1 - Twinkle, Twinkle Little Star - Var. D



Metronome Setting

80

Tuning Note(s)

D3

Grading Criteria

star 1	LH: Thumb is behind the 2nd finger, round hand shape
star 2	Bow hold: keep the thumb bent and in the correct position
star 3	Sound is clear and articulate (not scratchy)
star 4	1st and 4th finger notes are played in tune
star 5	3rd finger notes are played in tune

Resource Links:

For clickable resource links, please visit www.emmsmusic.com/orch-music-mastery/

Cello Assignment #17

Suzuki Bk. 1 #1 - Twinkle, Twinkle Little Star - Theme

Theme

f marcato

Metronome Setting

80

Tuning Note(s)

D3

Grading Criteria

star 1	LH: Thumb is behind the second finger
star 2	Bow moves in a straight line
star 3	Correct marcato articulation, with weight and separation
star 4	1st and 4th finger notes are played in tune
star 5	3rd finger notes are played in tune

Resource Links:

For clickable resource links, please visit www.emmsmusic.com/orch-music-mastery/

Cello Assignment #18

Suzuki Bk. 1 #2 - French Folk Song

To develop the practice of tonalization

Folk Song

Moderato

mf

Metronome Setting

100

Tuning Note(s)

D3

Grading Criteria

star 1	LH: Thumb is behind the 2nd finger, round hand shape
star 2	Notes are played legato with metronome
star 3	Full bow is used for each note
star 4	3rd finger notes are played in tune
star 5	1st and 4th finger notes are played in tune

Resource Links:

For clickable resource links, please visit www.emmsmusic.com/orch-music-mastery/

Cello Assignment #19

Essentials for Strings p. 27 #1, D Major Scale, 1 oct. (upper)



Metronome Setting

60

Tuning Note(s)

D3

Grading Criteria

star 1	LH: Thumb is behind the 2nd finger, round hand shape
star 2	Notes are played legato with metronome
star 3	Full bow is used for each note
star 4	3rd finger notes are played in tune
star 5	1st and 4th finger notes are played in tune

Resource Links:

For clickable resource links, please visit www.emmsmusic.com/orch-music-mastery/

Cello Assignment #20

Suzuki Bk. 1 #3 - Lightly Row

Moderato **Folk Song**

mf

Keep the 3rd finger down.

Metronome Setting
quarter=120 or half=60

Grading Criteria

Tuning Note(s)
D3

star 1	LH: On fingertips, 3rd finger is kept down while playing open A
star 2	Every note has a clear articulation
star 3	Correct Rhythm with Metronome
star 4	1st and 4th finger notes are played in tune
star 5	3rd finger notes are played in tune

Resource Links:

For clickable resource links, please visit www.emmsmusic.com/orch-music-mastery/