

# NATURAL MINOR SCALES

*C Natural Minor Scale*

Musical notation for the C Natural Minor Scale in 2/4 time. The scale is written on a single staff with a treble clef and a key signature of three flats (Bb, Eb, Ab). The notes are C, D, Eb, F, G, Ab, Bb, C. The scale is presented in two directions: ascending and descending. The notes Eb, F, G, and Ab are highlighted in green in the original image.

*F Natural Minor Scale*

Musical notation for the F Natural Minor Scale in 2/4 time. The scale is written on a single staff with a treble clef and a key signature of two flats (Bb, Eb). The notes are F, G, Ab, Bb, C, D, Eb, F. The scale is presented in two directions: ascending and descending. The notes Ab, Bb, C, and D are highlighted in green in the original image.

*Bb Natural Minor Scale*

Musical notation for the Bb Natural Minor Scale in 2/4 time. The scale is written on a single staff with a treble clef and a key signature of three flats (Bb, Eb, Ab). The notes are Bb, C, D, Eb, F, G, Ab, Bb. The scale is presented in two directions: ascending and descending. The notes D, Eb, F, and G are highlighted in green in the original image.

*Eb Natural Minor Scale*

Musical notation for the Eb Natural Minor Scale in 2/4 time. The scale is written on a single staff with a treble clef and a key signature of three flats (Bb, Eb, Ab). The notes are Eb, F, G, Ab, Bb, C, D, Eb. The scale is presented in two directions: ascending and descending. The notes G, Ab, Bb, and C are highlighted in green in the original image.

*Ab Natural Minor Scale*

Musical notation for the Ab Natural Minor Scale in 2/4 time. The scale is written on a single staff with a treble clef and a key signature of three flats (Bb, Eb, Ab). The notes are Ab, Bb, C, D, Eb, F, G, Ab. The scale is presented in two directions: ascending and descending. The notes C, D, Eb, and F are highlighted in green in the original image.

*C#/Db Natural Minor Scale*

Musical notation for the C#/Db Natural Minor Scale in 2/4 time. The scale is written on a single staff with a treble clef and a key signature of three sharps (F#, C#, G#). The notes are C#, D, Eb, F, G, Ab, Bb, C#. The scale is presented in two directions: ascending and descending. The notes D, Eb, F, and G are highlighted in green in the original image.

*F# Natural Minor Scale*

Musical notation for the F# Natural Minor Scale in 2/4 time. The scale is written on a single staff with a treble clef and a key signature of two sharps (F#, C#). The notes are F#, G, Ab, Bb, C, D, Eb, F#. The scale is presented in two directions: ascending and descending. The notes Ab, Bb, C, and D are highlighted in green in the original image.

*B Natural Minor Scale*

Musical notation for the B Natural Minor Scale in 2/4 time. The scale is written on a single staff with a treble clef and a key signature of two sharps (F#, C#). The notes are B, C, D, Eb, F, G, Ab, B. The scale is presented in two directions: ascending and descending. The notes D, Eb, F, and G are highlighted in green in the original image.

*E Natural Minor Scale*

Musical notation for the E Natural Minor Scale in 2/4 time. The scale is written on a single staff with a treble clef and a key signature of one sharp (F#). The notes are E, F, G, Ab, Bb, C, D, E. The scale is presented in two directions: ascending and descending. The notes G, Ab, Bb, and C are highlighted in green in the original image.

*A Natural Minor Scale*

Musical notation for the A Natural Minor Scale in 2/4 time. The scale is written on a single staff with a treble clef and a key signature of no sharps or flats. The notes are A, B, C, D, Eb, F, G, A. The scale is presented in two directions: ascending and descending. The notes C, D, Eb, and F are highlighted in green in the original image.

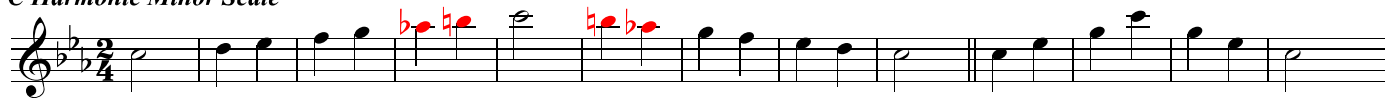
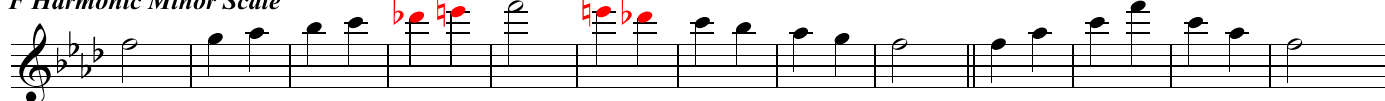
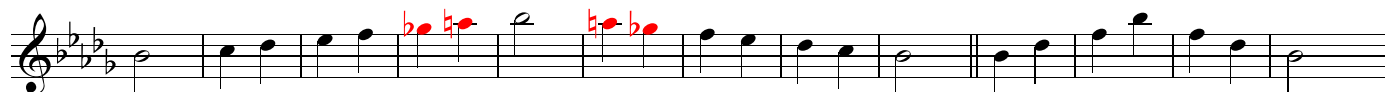
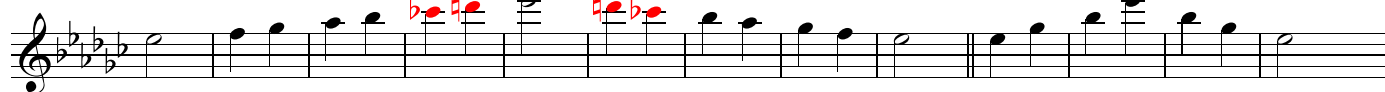
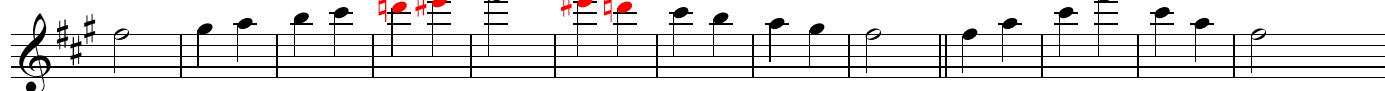
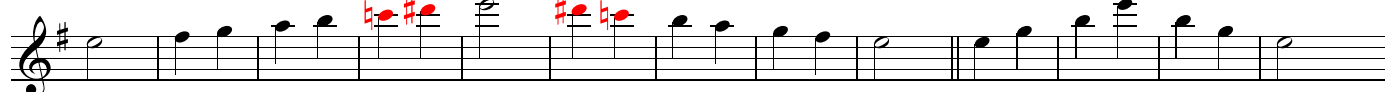
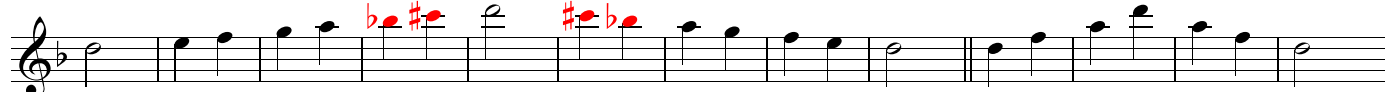
*D Natural Minor Scale*

Musical notation for the D Natural Minor Scale in 2/4 time. The scale is written on a single staff with a treble clef and a key signature of two flats (Bb, Eb). The notes are D, E, F, G, Ab, Bb, C, D. The scale is presented in two directions: ascending and descending. The notes E, F, G, and Ab are highlighted in green in the original image.

*G Natural Minor Scale*

Musical notation for the G Natural Minor Scale in 2/4 time. The scale is written on a single staff with a treble clef and a key signature of one flat (Bb). The notes are G, A, B, C, D, Eb, F, G. The scale is presented in two directions: ascending and descending. The notes B, C, D, and Eb are highlighted in green in the original image.

# HARMONIC MINOR SCALES

*C Harmonic Minor Scale**F Harmonic Minor Scale**Bb Harmonic Minor Scale**Eb Harmonic Minor Scale**Ab Harmonic Minor Scale**C#/Db Harmonic Minor Scale**F# Harmonic Minor Scale**B Harmonic Minor Scale**E Harmonic Minor Scale**A Harmonic Minor Scale**D Harmonic Minor Scale**G Harmonic Minor Scale*

Xylophone

# MELODIC MINOR SCALES

*C Melodic Minor Scale*

Musical notation for the C Melodic Minor Scale in 2/4 time. The scale is written on a single treble clef staff. The key signature has two flats (Bb and Eb). The notes are C, D, Eb, E, F, G, Ab, A, Bb, B, C. The first six notes (C to Ab) are ascending, and the last six notes (A to C) are descending. Blue accidentals (flats) are placed above the Eb and Ab notes in both directions.

*F Melodic Minor Scale*

Musical notation for the F Melodic Minor Scale in 2/4 time. The scale is written on a single treble clef staff. The key signature has three flats (Bb, Eb, and Ab). The notes are F, G, Ab, A, Bb, C, D, Eb, E, F. The first six notes (F to D) are ascending, and the last six notes (Eb to F) are descending. Blue accidentals (flats) are placed above the Ab and D notes in both directions.

*Bb Melodic Minor Scale*

Musical notation for the Bb Melodic Minor Scale in 2/4 time. The scale is written on a single treble clef staff. The key signature has three flats (Bb, Eb, and Ab). The notes are Bb, C, D, Eb, E, F, G, Ab, A, Bb. The first six notes (Bb to G) are ascending, and the last six notes (Ab to Bb) are descending. Blue accidentals (flats) are placed above the Eb and Ab notes in both directions.

*Eb Melodic Minor Scale*

Musical notation for the Eb Melodic Minor Scale in 2/4 time. The scale is written on a single treble clef staff. The key signature has three flats (Bb, Eb, and Ab). The notes are Eb, F, G, Ab, A, Bb, C, D, Eb, E. The first six notes (Eb to C) are ascending, and the last six notes (D to Eb) are descending. Blue accidentals (flats) are placed above the Ab and D notes in both directions.

*Ab Melodic Minor Scale*

Musical notation for the Ab Melodic Minor Scale in 2/4 time. The scale is written on a single treble clef staff. The key signature has four flats (Bb, Eb, Ab, and Db). The notes are Ab, Bb, C, D, Eb, F, G, Ab, Bb, C. The first six notes (Ab to G) are ascending, and the last six notes (Ab to C) are descending. Blue accidentals (flats) are placed above the Eb and Ab notes in both directions.

*C#/Db Melodic Minor Scale*

Musical notation for the C#/Db Melodic Minor Scale in 2/4 time. The scale is written on a single treble clef staff. The key signature has three sharps (F#, C#, and G#). The notes are C#, D, Eb, E, F, G, Ab, A, Bb, B, C#. The first six notes (C# to Ab) are ascending, and the last six notes (A to C#) are descending. Blue accidentals (flats) are placed above the Eb and Ab notes in both directions.

*F# Melodic Minor Scale*

Musical notation for the F# Melodic Minor Scale in 2/4 time. The scale is written on a single treble clef staff. The key signature has three sharps (F#, C#, and G#). The notes are F#, G, Ab, A, Bb, C, D, Eb, E, F#. The first six notes (F# to D) are ascending, and the last six notes (Eb to F#) are descending. Blue accidentals (flats) are placed above the Ab and D notes in both directions.

*B Melodic Minor Scale*

Musical notation for the B Melodic Minor Scale in 2/4 time. The scale is written on a single treble clef staff. The key signature has two sharps (F# and C#). The notes are B, C, D, Eb, E, F, G, Ab, A, B. The first six notes (B to G) are ascending, and the last six notes (Ab to B) are descending. Blue accidentals (flats) are placed above the Eb and Ab notes in both directions.

*E Melodic Minor Scale*

Musical notation for the E Melodic Minor Scale in 2/4 time. The scale is written on a single treble clef staff. The key signature has one sharp (F#). The notes are E, F, G, Ab, A, B, C, D, Eb, E. The first six notes (E to C) are ascending, and the last six notes (D to E) are descending. Blue accidentals (flats) are placed above the Ab and D notes in both directions.

*A Melodic Minor Scale*

Musical notation for the A Melodic Minor Scale in 2/4 time. The scale is written on a single treble clef staff. The key signature has no sharps or flats. The notes are A, B, C, D, Eb, E, F, G, Ab, A, B. The first six notes (A to G) are ascending, and the last six notes (Ab to B) are descending. Blue accidentals (flats) are placed above the Eb and Ab notes in both directions.

*D Melodic Minor Scale*

Musical notation for the D Melodic Minor Scale in 2/4 time. The scale is written on a single treble clef staff. The key signature has two sharps (F# and C#). The notes are D, E, F, G, Ab, A, B, C, D, Eb, E. The first six notes (D to C) are ascending, and the last six notes (D to E) are descending. Blue accidentals (flats) are placed above the Ab and D notes in both directions.

*G Melodic Minor Scale*

Musical notation for the G Melodic Minor Scale in 2/4 time. The scale is written on a single treble clef staff. The key signature has one sharp (F#). The notes are G, A, B, C, D, Eb, E, F, G, Ab, A, B. The first six notes (G to F) are ascending, and the last six notes (Ab to B) are descending. Blue accidentals (flats) are placed above the Eb and Ab notes in both directions.