

Flute

NATURAL MINOR SCALES

C Natural Minor Scale

Musical notation for the C Natural Minor Scale in 2/4 time. The scale is written on a single staff with a treble clef and a key signature of three flats (Bb, Eb, Ab). The notes are C, D, Eb, E, F, G, Ab, Bb, C. The first octave is played ascending and descending, followed by a second octave ascending and descending. Green accidentals (flats) are placed above the Eb, Ab, and Bb notes.

F Natural Minor Scale

Musical notation for the F Natural Minor Scale in 2/4 time. The scale is written on a single staff with a treble clef and a key signature of two flats (Bb, Eb). The notes are F, G, Ab, A, Bb, C, D, Eb, F. The first octave is played ascending and descending, followed by a second octave ascending and descending. Green accidentals (flats) are placed above the Ab, Bb, and Eb notes.

Bb Natural Minor Scale

Musical notation for the Bb Natural Minor Scale in 2/4 time. The scale is written on a single staff with a treble clef and a key signature of three flats (Bb, Eb, Ab). The notes are Bb, C, D, Eb, F, G, Ab, Bb, C. The first octave is played ascending and descending, followed by a second octave ascending and descending. Green accidentals (flats) are placed above the Eb, Ab, and Bb notes.

Eb Natural Minor Scale

Musical notation for the Eb Natural Minor Scale in 2/4 time. The scale is written on a single staff with a treble clef and a key signature of four flats (Bb, Eb, Ab, Db). The notes are Eb, F, G, Ab, Bb, C, D, Eb, F. The first octave is played ascending and descending, followed by a second octave ascending and descending. Green accidentals (flats) are placed above the Ab, Bb, and Eb notes.

Ab Natural Minor Scale

Musical notation for the Ab Natural Minor Scale in 2/4 time. The scale is written on a single staff with a treble clef and a key signature of four flats (Bb, Eb, Ab, Db). The notes are Ab, Bb, C, D, Eb, F, G, Ab, Bb. The first octave is played ascending and descending, followed by a second octave ascending and descending. Green accidentals (flats) are placed above the Bb, Eb, and Ab notes.

C#/Db Natural Minor Scale

Musical notation for the C#/Db Natural Minor Scale in 2/4 time. The scale is written on a single staff with a treble clef and a key signature of one sharp (F#). The notes are C#, D, Eb, E, F, G, Ab, C#, D. The first octave is played ascending and descending, followed by a second octave ascending and descending. Green accidentals (flats) are placed above the Eb, Ab, and C# notes.

F# Natural Minor Scale

Musical notation for the F# Natural Minor Scale in 2/4 time. The scale is written on a single staff with a treble clef and a key signature of two sharps (F#, C#). The notes are F#, G, Ab, A, Bb, C, D, E, F#. The first octave is played ascending and descending, followed by a second octave ascending and descending. Green accidentals (flats) are placed above the Ab, Bb, and E notes.

B Natural Minor Scale

Musical notation for the B Natural Minor Scale in 2/4 time. The scale is written on a single staff with a treble clef and a key signature of two sharps (F#, C#). The notes are B, C, D, E, F, G, Ab, B, C. The first octave is played ascending and descending, followed by a second octave ascending and descending. Green accidentals (flats) are placed above the E, F, and Ab notes.

E Natural Minor Scale

Musical notation for the E Natural Minor Scale in 2/4 time. The scale is written on a single staff with a treble clef and a key signature of one sharp (F#). The notes are E, F, G, Ab, B, C, D, E, F. The first octave is played ascending and descending, followed by a second octave ascending and descending. Green accidentals (flats) are placed above the Ab, B, and E notes.

A Natural Minor Scale

Musical notation for the A Natural Minor Scale in 2/4 time. The scale is written on a single staff with a treble clef and a key signature of no sharps or flats. The notes are A, B, C, D, E, F, G, A, B. The first octave is played ascending and descending, followed by a second octave ascending and descending. Green accidentals (flats) are placed above the D, E, and F notes.

D Natural Minor Scale

Musical notation for the D Natural Minor Scale in 2/4 time. The scale is written on a single staff with a treble clef and a key signature of two flats (Bb, Eb). The notes are D, E, F, G, Ab, Bb, C, D, E. The first octave is played ascending and descending, followed by a second octave ascending and descending. Green accidentals (flats) are placed above the Ab, Bb, and C notes.

G Natural Minor Scale

Musical notation for the G Natural Minor Scale in 2/4 time. The scale is written on a single staff with a treble clef and a key signature of one flat (Bb). The notes are G, A, B, C, D, Eb, F, G, A. The first octave is played ascending and descending, followed by a second octave ascending and descending. Green accidentals (flats) are placed above the Bb, C, and F notes.

Flute

HARMONIC MINOR SCALES

C Harmonic Minor Scale

Musical notation for the C Harmonic Minor Scale in 2/4 time. The scale is written on a single staff in treble clef with a key signature of two flats (Bb and Eb). The notes are C, D, Eb, E, F, G, Ab, A, G, F, E, D, C. The tritone intervals (Eb-E and Ab-A) are highlighted with red accidentals.

F Harmonic Minor Scale

Musical notation for the F Harmonic Minor Scale in 2/4 time. The scale is written on a single staff in treble clef with a key signature of three flats (Bb, Eb, and Ab). The notes are F, G, Ab, A, Bb, C, Db, D, C, Bb, A, G, F. The tritone intervals (Ab-A and Db-D) are highlighted with red accidentals.

Bb Harmonic Minor Scale

Musical notation for the Bb Harmonic Minor Scale in 2/4 time. The scale is written on a single staff in treble clef with a key signature of three flats (Bb, Eb, and Ab). The notes are Bb, C, Db, D, Eb, F, Gb, G, F, Eb, D, C, Bb. The tritone intervals (Db-D and Gb-G) are highlighted with red accidentals.

Eb Harmonic Minor Scale

Musical notation for the Eb Harmonic Minor Scale in 2/4 time. The scale is written on a single staff in treble clef with a key signature of four flats (Bb, Eb, Ab, and Db). The notes are Eb, F, Gb, G, Ab, Bb, Cb, C, Bb, Ab, G, F, Eb. The tritone intervals (Gb-G and Cb-C) are highlighted with red accidentals.

Ab Harmonic Minor Scale

Musical notation for the Ab Harmonic Minor Scale in 2/4 time. The scale is written on a single staff in treble clef with a key signature of four flats (Bb, Eb, Ab, and Db). The notes are Ab, Bb, Cb, C, Db, Eb, Fb, F, Eb, Db, C, Bb, Ab. The tritone intervals (Cb-C and Fb-F) are highlighted with red accidentals.

C#/Db Harmonic Minor Scale

Musical notation for the C#/Db Harmonic Minor Scale in 2/4 time. The scale is written on a single staff in treble clef with a key signature of three sharps (F#, C#, and G#). The notes are C#, D, Eb, E, F, G, Ab, A, G, F, E, D, C#. The tritone intervals (Eb-E and Ab-A) are highlighted with red accidentals.

F# Harmonic Minor Scale

Musical notation for the F# Harmonic Minor Scale in 2/4 time. The scale is written on a single staff in treble clef with a key signature of two sharps (F# and C#). The notes are F#, G, Ab, A, B, C, Db, D, C, B, A, G, F#. The tritone intervals (Ab-A and Db-D) are highlighted with red accidentals.

B Harmonic Minor Scale

Musical notation for the B Harmonic Minor Scale in 2/4 time. The scale is written on a single staff in treble clef with a key signature of two sharps (F# and C#). The notes are B, C, Db, D, E, F, Gb, G, F, E, D, C, B. The tritone intervals (Db-D and Gb-G) are highlighted with red accidentals.

E Harmonic Minor Scale

Musical notation for the E Harmonic Minor Scale in 2/4 time. The scale is written on a single staff in treble clef with a key signature of one sharp (F#). The notes are E, F, Gb, G, A, B, Cb, C, B, A, G, F, E. The tritone intervals (Gb-G and Cb-C) are highlighted with red accidentals.

A Harmonic Minor Scale

Musical notation for the A Harmonic Minor Scale in 2/4 time. The scale is written on a single staff in treble clef with a key signature of no sharps or flats. The notes are A, B, Cb, C, D, E, Fb, F, E, D, C, B, A. The tritone intervals (Cb-C and Fb-F) are highlighted with red accidentals.

D Harmonic Minor Scale

Musical notation for the D Harmonic Minor Scale in 2/4 time. The scale is written on a single staff in treble clef with a key signature of two sharps (F# and C#). The notes are D, E, Fb, F, G, A, Bb, B, A, G, F, E, D. The tritone intervals (Fb-F and Bb-B) are highlighted with red accidentals.

G Harmonic Minor Scale

Musical notation for the G Harmonic Minor Scale in 2/4 time. The scale is written on a single staff in treble clef with a key signature of one sharp (F#). The notes are G, A, Bb, B, C, D, Eb, D, C, B, A, G. The tritone intervals (Bb-B and Eb-E) are highlighted with red accidentals.

Flute

MELODIC MINOR SCALES

C Melodic Minor Scale

Musical notation for the C Melodic Minor Scale in 2/4 time. The scale is written on a single staff in treble clef with a key signature of two flats (Bb, Eb). The notes are C, D, Eb, E, F, G, Ab, A, Bb, B, C. The ascending and descending sequences are separated by a double bar line. Blue accidentals are placed above the notes Eb, Ab, Bb, and B.

F Melodic Minor Scale

Musical notation for the F Melodic Minor Scale in 2/4 time. The scale is written on a single staff in treble clef with a key signature of three flats (Bb, Eb, Ab). The notes are F, G, Ab, A, Bb, B, C, C, Bb, Ab, G, F. The ascending and descending sequences are separated by a double bar line. Blue accidentals are placed above the notes Ab, Bb, and B.

Bb Melodic Minor Scale

Musical notation for the Bb Melodic Minor Scale in 2/4 time. The scale is written on a single staff in treble clef with a key signature of three flats (Bb, Eb, Ab). The notes are Bb, C, D, Eb, E, F, G, G, F, Eb, D, Bb. The ascending and descending sequences are separated by a double bar line. Blue accidentals are placed above the notes Eb, F, and G.

Eb Melodic Minor Scale

Musical notation for the Eb Melodic Minor Scale in 2/4 time. The scale is written on a single staff in treble clef with a key signature of three flats (Bb, Eb, Ab). The notes are Eb, F, G, Ab, A, Bb, B, C, C, Bb, Ab, G, Eb. The ascending and descending sequences are separated by a double bar line. Blue accidentals are placed above the notes Ab, Bb, and B.

Ab Melodic Minor Scale

Musical notation for the Ab Melodic Minor Scale in 2/4 time. The scale is written on a single staff in treble clef with a key signature of four flats (Bb, Eb, Ab, Db). The notes are Ab, Bb, C, D, Eb, E, F, F, E, D, C, Bb, Ab. The ascending and descending sequences are separated by a double bar line. Blue accidentals are placed above the notes Eb, F, and F.

C#/Db Melodic Minor Scale

Musical notation for the C#/Db Melodic Minor Scale in 2/4 time. The scale is written on a single staff in treble clef with a key signature of one sharp (F#) and one flat (Bb). The notes are C#, D, Eb, E, F, G, Ab, A, Bb, B, C#. The ascending and descending sequences are separated by a double bar line. Blue accidentals are placed above the notes Eb, Ab, and Bb.

F# Melodic Minor Scale

Musical notation for the F# Melodic Minor Scale in 2/4 time. The scale is written on a single staff in treble clef with a key signature of two sharps (F#, C#). The notes are F#, G, Ab, A, Bb, B, C, C, Bb, Ab, G, F#. The ascending and descending sequences are separated by a double bar line. Blue accidentals are placed above the notes Ab, Bb, and B.

B Melodic Minor Scale

Musical notation for the B Melodic Minor Scale in 2/4 time. The scale is written on a single staff in treble clef with a key signature of two sharps (F#, C#). The notes are B, C, D, Eb, E, F, G, G, F, Eb, D, B. The ascending and descending sequences are separated by a double bar line. Blue accidentals are placed above the notes Eb, F, and G.

E Melodic Minor Scale

Musical notation for the E Melodic Minor Scale in 2/4 time. The scale is written on a single staff in treble clef with a key signature of one sharp (F#). The notes are E, F, G, Ab, A, Bb, B, C, C, Bb, Ab, G, E. The ascending and descending sequences are separated by a double bar line. Blue accidentals are placed above the notes Ab, Bb, and B.

A Melodic Minor Scale

Musical notation for the A Melodic Minor Scale in 2/4 time. The scale is written on a single staff in treble clef with a key signature of no sharps or flats. The notes are A, B, C, D, Eb, E, F, F, E, D, C, B, A. The ascending and descending sequences are separated by a double bar line. Blue accidentals are placed above the notes Eb, F, and F.

D Melodic Minor Scale

Musical notation for the D Melodic Minor Scale in 2/4 time. The scale is written on a single staff in treble clef with a key signature of two sharps (F#, C#). The notes are D, E, F, G, Ab, A, Bb, B, C, C, Bb, Ab, G, D. The ascending and descending sequences are separated by a double bar line. Blue accidentals are placed above the notes Ab, Bb, and B.

G Melodic Minor Scale

Musical notation for the G Melodic Minor Scale in 2/4 time. The scale is written on a single staff in treble clef with a key signature of one sharp (F#). The notes are G, A, B, C, D, Eb, E, F, F, E, D, C, B, G. The ascending and descending sequences are separated by a double bar line. Blue accidentals are placed above the notes Eb, F, and F.

Bb Clarinet

NATURAL MINOR SCALES

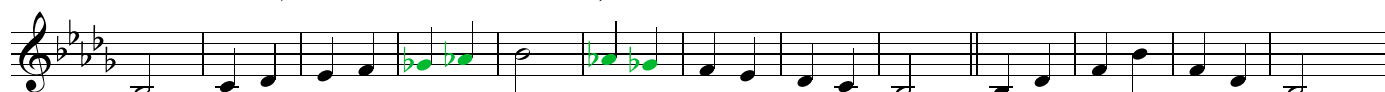
C Natural Minor Scale ("Bb" Concert Natural Minor)



F Natural Minor Scale ("Eb" Concert Natural Minor)



Bb Natural Minor Scale ("Ab" Concert Natural Minor)



Eb Natural Minor Scale ("Db" Concert Natural Minor)



Ab Natural Minor Scale ("Gb" Concert Natural Minor)



C#/Db Natural Minor Scale ("B" Concert Natural Minor)



F# Natural Minor Scale ("E" Concert Natural Minor)



B Natural Minor Scale ("A" Concert Natural Minor)



E Natural Minor Scale ("D" Concert Natural Minor)



A Natural Minor Scale ("G" Concert Natural Minor)



D Natural Minor Scale ("C" Concert Natural Minor)



G Natural Minor Scale ("F" Concert Natural Minor)



Bb Clarinet **HARMONIC MINOR SCALES**

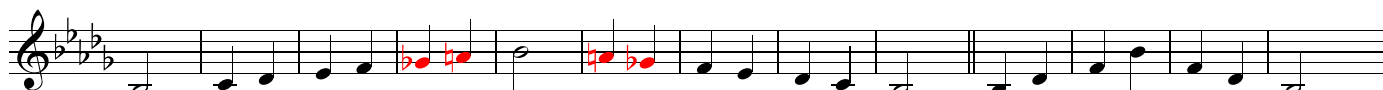
C Harmonic Minor Scale ("Bb" Concert Harmonic Minor)



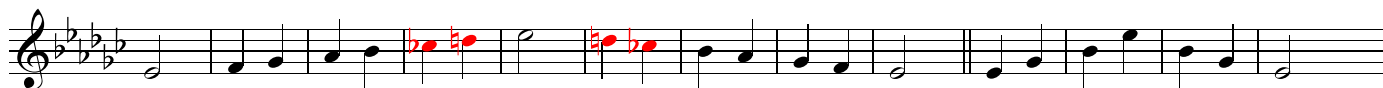
F Harmonic Minor Scale ("Eb" Concert Harmonic Minor)



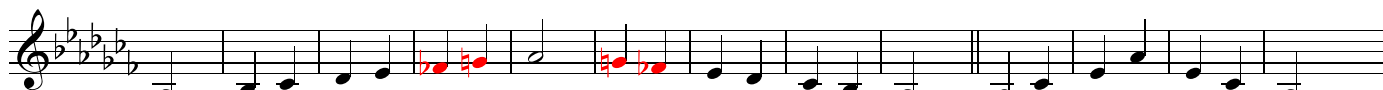
Bb Harmonic Minor Scale ("Ab" Concert Harmonic Minor)



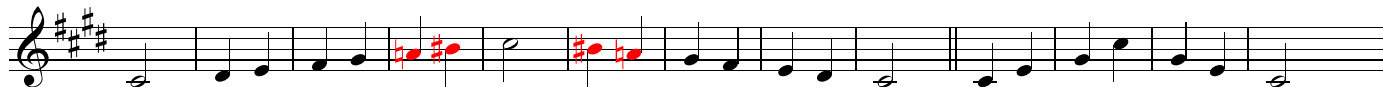
Eb Harmonic Minor Scale ("Db" Concert Harmonic Minor)



Ab Harmonic Minor Scale ("Gb" Concert Harmonic Minor)



C#/Db Harmonic Minor Scale ("B" Concert Harmonic Minor)



F# Harmonic Minor Scale ("E" Concert Harmonic Minor)



B Harmonic Minor Scale ("A" Concert Harmonic Minor)



E Harmonic Minor Scale ("D" Concert Harmonic Minor)



A Harmonic Minor Scale ("G" Concert Harmonic Minor)



D Harmonic Minor Scale ("C" Concert Harmonic Minor)



G Harmonic Minor Scale ("F" Concert Harmonic Minor)



Bb Clarinet

MELODIC MINOR SCALES

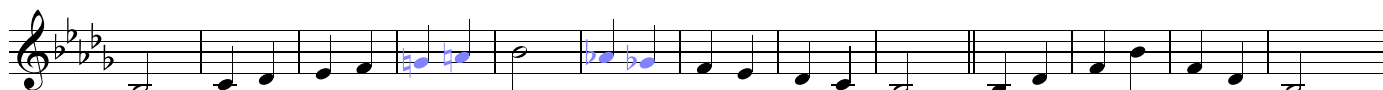
C Melodic Minor Scale ("Bb" Concert Melodic Minor)



F Melodic Minor Scale ("Eb" Concert Melodic Minor)



Bb Melodic Minor Scale ("Ab" Concert Melodic Minor)



Eb Melodic Minor Scale ("Db" Concert Melodic Minor)



Ab Melodic Minor Scale ("Gb" Concert Melodic Minor)



C#/Db Melodic Minor Scale ("B" Concert Melodic Minor)



F# Melodic Minor Scale ("E" Concert Melodic Minor)



B Melodic Minor Scale ("A" Concert Melodic Minor)



E Melodic Minor Scale ("D" Concert Melodic Minor)



A Melodic Minor Scale ("G" Concert Melodic Minor)



D Melodic Minor Scale ("C" Concert Melodic Minor)



G Melodic Minor Scale ("F" Concert Melodic Minor)



Alto Saxophone

NATURAL MINOR SCALES

C Natural Minor Scale ("Eb" Concert Natural Minor)



F Natural Minor Scale ("Ab" Concert Natural Minor)



Bb Natural Minor Scale ("Db" Concert Natural Minor)



Eb Natural Minor Scale ("Gb" Concert Natural Minor)



Ab Natural Minor Scale ("B" Concert Natural Minor)



C#/Db Natural Minor Scale ("E" Concert Natural Minor)



F# Natural Minor Scale ("A" Concert Natural Minor)



B Natural Minor Scale ("D" Concert Natural Minor)



E Natural Minor Scale ("G" Concert Natural Minor)



A Natural Minor Scale ("C" Concert Natural Minor)



D Natural Minor Scale ("F" Concert Natural Minor)



G Natural Minor Scale ("Bb" Concert Natural Minor)



Alto Saxophone **HARMONIC MINOR SCALES**

C Harmonic Minor Scale ("Eb" Concert Harmonic Minor)



F Harmonic Minor Scale ("Ab" Concert Harmonic Minor)



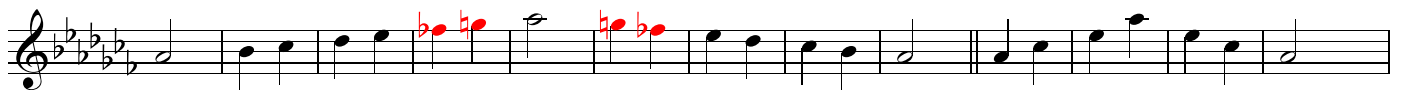
Bb Harmonic Minor Scale ("Db" Concert Harmonic Minor)



Eb Harmonic Minor Scale ("Gb" Concert Harmonic Minor)



Ab Harmonic Minor Scale ("B" Concert Harmonic Minor)



C#/Db Harmonic Minor Scale ("E" Concert Harmonic Minor)



F# Harmonic Minor Scale ("A" Concert Harmonic Minor)



B Harmonic Minor Scale ("D" Concert Harmonic Minor)



E Harmonic Minor Scale ("G" Concert Harmonic Minor)



A Harmonic Minor Scale ("C" Concert Harmonic Minor)



D Harmonic Minor Scale ("F" Concert Harmonic Minor)



G Harmonic Minor Scale ("Bb" Concert Harmonic Minor)



Alto Saxophone

MELODIC MINOR SCALES

C Melodic Minor Scale ("Eb" Concert Melodic Minor)



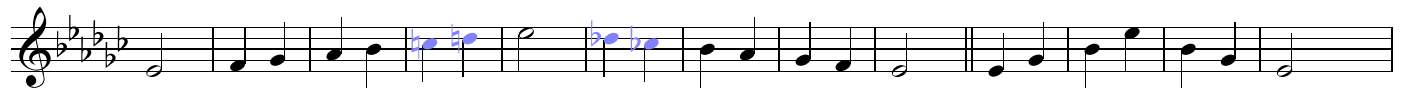
F Melodic Minor Scale ("Ab" Concert Melodic Minor)



Bb Melodic Minor Scale ("Db" Concert Melodic Minor)



Eb Melodic Minor Scale ("Gb" Concert Melodic Minor)



Ab Melodic Minor Scale ("B" Concert Melodic Minor)



C#/Db Melodic Minor Scale ("E" Concert Melodic Minor)



F# Melodic Minor Scale ("A" Concert Melodic Minor)



B Melodic Minor Scale ("D" Concert Melodic Minor)



E Melodic Minor Scale ("G" Concert Melodic Minor)



A Melodic Minor Scale ("C" Concert Melodic Minor)



D Melodic Minor Scale ("F" Concert Melodic Minor)



G Melodic Minor Scale ("Bb" Concert Melodic Minor)



Tenor Saxophone **NATURAL MINOR SCALES**

C Natural Minor Scale ("Bb" Concert Natural Minor)



F Natural Minor Scale ("Eb" Concert Natural Minor)



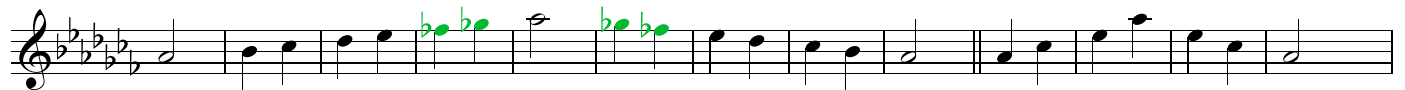
Bb Natural Minor Scale ("Ab" Concert Natural Minor)



Eb Natural Minor Scale ("Db" Concert Natural Minor)



Ab Natural Minor Scale ("Gb" Concert Natural Minor)



C#/Db Natural Minor Scale ("B" Concert Natural Minor)



F# Natural Minor Scale ("E" Concert Natural Minor)



B Natural Minor Scale ("A" Concert Natural Minor)



E Natural Minor Scale ("D" Concert Natural Minor)



A Natural Minor Scale ("G" Concert Natural Minor)



D Natural Minor Scale ("C" Concert Natural Minor)



G Natural Minor Scale ("F" Concert Natural Minor)



Tenor Saxophone **HARMONIC MINOR SCALES**

C Harmonic Minor Scale ("Bb" Concert Harmonic Minor)



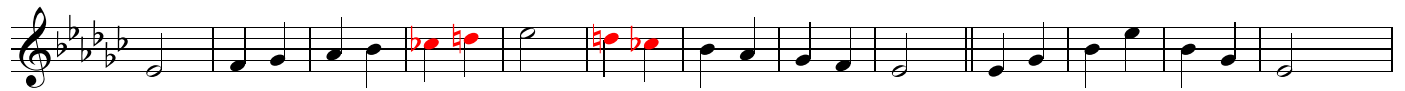
F Harmonic Minor Scale ("Eb" Concert Harmonic Minor)



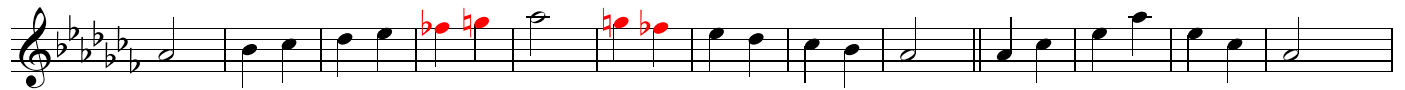
Bb Harmonic Minor Scale ("Ab" Concert Harmonic Minor)



Eb Harmonic Minor Scale ("Db" Concert Harmonic Minor)



Ab Harmonic Minor Scale ("Gb" Concert Harmonic Minor)



C#/Db Harmonic Minor Scale ("B" Concert Harmonic Minor)



F# Harmonic Minor Scale ("E" Concert Harmonic Minor)



B Harmonic Minor Scale ("A" Concert Harmonic Minor)



E Harmonic Minor Scale ("D" Concert Harmonic Minor)



A Harmonic Minor Scale ("G" Concert Harmonic Minor)



D Harmonic Minor Scale ("C" Concert Harmonic Minor)



G Harmonic Minor Scale ("F" Concert Harmonic Minor)



Tenor Saxophone **MELODIC MINOR SCALES**

C Melodic Minor Scale ("Bb" Concert Melodic Minor)



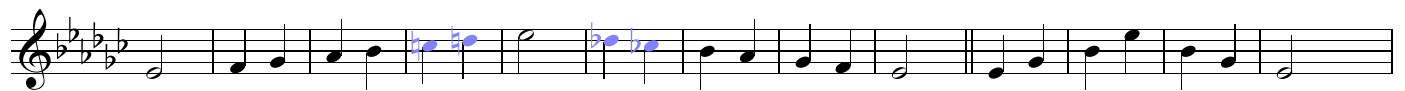
F Melodic Minor Scale ("Eb" Concert Melodic Minor)



Bb Melodic Minor Scale ("Ab" Concert Melodic Minor)



Eb Melodic Minor Scale ("Db" Concert Melodic Minor)



Ab Melodic Minor Scale ("Gb" Concert Melodic Minor)



C#/Db Melodic Minor Scale ("B" Concert Melodic Minor)



F# Melodic Minor Scale ("E" Concert Melodic Minor)



B Melodic Minor Scale ("A" Concert Melodic Minor)



E Melodic Minor Scale ("D" Concert Melodic Minor)



A Melodic Minor Scale ("G" Concert Melodic Minor)



D Melodic Minor Scale ("C" Concert Melodic Minor)



G Melodic Minor Scale ("F" Concert Melodic Minor)



Bb Trumpet

NATURAL MINOR SCALES

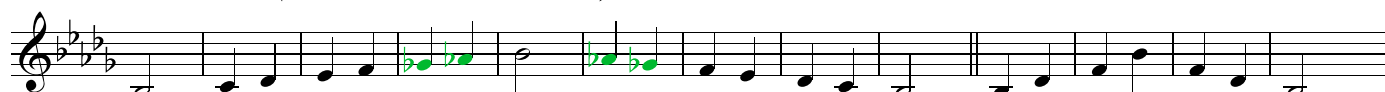
C Natural Minor Scale ("Bb" Concert Natural Minor)



F Natural Minor Scale ("Eb" Concert Natural Minor)



Bb Natural Minor Scale ("Ab" Concert Natural Minor)



Eb Natural Minor Scale ("Db" Concert Natural Minor)



Ab Natural Minor Scale ("Gb" Concert Natural Minor)



C#/Db Natural Minor Scale ("B" Concert Natural Minor)



F# Natural Minor Scale ("E" Concert Natural Minor)



B Natural Minor Scale ("A" Concert Natural Minor)



E Natural Minor Scale ("D" Concert Natural Minor)



A Natural Minor Scale ("G" Concert Natural Minor)



D Natural Minor Scale ("C" Concert Natural Minor)



G Natural Minor Scale ("F" Concert Natural Minor)



Bb Trumpet **HARMONIC MINOR SCALES**

C Harmonic Minor Scale ("Bb" Concert Harmonic Minor)



F Harmonic Minor Scale ("Eb" Concert Harmonic Minor)



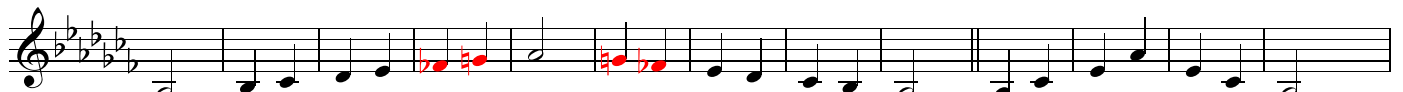
Bb Harmonic Minor Scale ("Ab" Concert Harmonic Minor)



Eb Harmonic Minor Scale ("Db" Concert Harmonic Minor)



Ab Harmonic Minor Scale ("Gb" Concert Harmonic Minor)



C#/Db Harmonic Minor Scale ("B" Concert Harmonic Minor)



F# Harmonic Minor Scale ("E" Concert Harmonic Minor)



B Harmonic Minor Scale ("A" Concert Harmonic Minor)



E Harmonic Minor Scale ("D" Concert Harmonic Minor)



A Harmonic Minor Scale ("G" Concert Harmonic Minor)



D Harmonic Minor Scale ("C" Concert Harmonic Minor)



G Harmonic Minor Scale ("F" Concert Harmonic Minor)



Bb Trumpet

MELODIC MINOR SCALES

C Melodic Minor Scale ("Bb" Concert Melodic Minor)

Musical notation for the C Melodic Minor Scale in B-flat major. The scale is written in treble clef with a key signature of two flats (B-flat and E-flat) and a 2/4 time signature. The notes are C, D, E, F, G, A-flat, B-flat, A, G, F, E, D, C. The first six notes are ascending, and the last six are descending. The notes A-flat and B-flat are highlighted in blue.

F Melodic Minor Scale ("Eb" Concert Melodic Minor)

Musical notation for the F Melodic Minor Scale in E-flat major. The scale is written in treble clef with a key signature of three flats (B-flat, E-flat, and A-flat) and a 2/4 time signature. The notes are F, G, A, B-flat, C, D-flat, E-flat, D, C, B-flat, A, G, F. The notes D-flat and E-flat are highlighted in blue.

Bb Melodic Minor Scale ("Ab" Concert Melodic Minor)

Musical notation for the B-flat Melodic Minor Scale in A-flat major. The scale is written in treble clef with a key signature of three flats (B-flat, E-flat, and A-flat) and a 2/4 time signature. The notes are B-flat, C, D, E-flat, F, G, A-flat, G, F, E-flat, D, C, B-flat. The notes E-flat and A-flat are highlighted in blue.

Eb Melodic Minor Scale ("Db" Concert Melodic Minor)

Musical notation for the E-flat Melodic Minor Scale in D-flat major. The scale is written in treble clef with a key signature of four flats (B-flat, E-flat, A-flat, and D-flat) and a 2/4 time signature. The notes are E-flat, F, G, A-flat, B-flat, C, D-flat, C, B-flat, A-flat, G, F, E-flat. The notes C and D-flat are highlighted in blue.

Ab Melodic Minor Scale ("Gb" Concert Melodic Minor)

Musical notation for the A-flat Melodic Minor Scale in G-flat major. The scale is written in treble clef with a key signature of four flats (B-flat, E-flat, A-flat, and D-flat) and a 2/4 time signature. The notes are A-flat, B-flat, C, D-flat, E-flat, F, G-flat, F, E-flat, D-flat, C, B-flat, A-flat. The notes F and G-flat are highlighted in blue.

C#/Db Melodic Minor Scale ("B" Concert Melodic Minor)

Musical notation for the C#/D-flat Melodic Minor Scale in B major. The scale is written in treble clef with a key signature of two sharps (F-sharp and C-sharp) and a 2/4 time signature. The notes are C#, D, E, F-sharp, G, A, B, A, G, F-sharp, E, D, C#. The notes F-sharp and A are highlighted in blue.

F# Melodic Minor Scale ("E" Concert Melodic Minor)

Musical notation for the F-sharp Melodic Minor Scale in E major. The scale is written in treble clef with a key signature of one sharp (F-sharp) and a 2/4 time signature. The notes are F-sharp, G, A, B, C, D, E, D, C, B, A, G, F-sharp. The notes C and D are highlighted in blue.

B Melodic Minor Scale ("A" Concert Melodic Minor)

Musical notation for the B Melodic Minor Scale in A major. The scale is written in treble clef with a key signature of one sharp (F-sharp) and a 2/4 time signature. The notes are B, C, D, E, F-sharp, G, A, G, F-sharp, E, D, C, B. The notes F-sharp and G are highlighted in blue.

E Melodic Minor Scale ("D" Concert Melodic Minor)

Musical notation for the E Melodic Minor Scale in D major. The scale is written in treble clef with a key signature of one sharp (F-sharp) and a 2/4 time signature. The notes are E, F, G, A, B, C, D, C, B, A, G, F, E. The notes C and B are highlighted in blue.

A Melodic Minor Scale ("G" Concert Melodic Minor)

Musical notation for the A Melodic Minor Scale in G major. The scale is written in treble clef with a key signature of one sharp (F-sharp) and a 2/4 time signature. The notes are A, B, C, D, E, F-sharp, G, F-sharp, E, D, C, B, A. The notes F-sharp and G are highlighted in blue.

D Melodic Minor Scale ("C" Concert Melodic Minor)

Musical notation for the D Melodic Minor Scale in C major. The scale is written in treble clef with a key signature of no sharps or flats and a 2/4 time signature. The notes are D, E, F, G, A, B, C, B, A, G, F, E, D. The notes B and A are highlighted in blue.

G Melodic Minor Scale ("F" Concert Melodic Minor)

Musical notation for the G Melodic Minor Scale in F major. The scale is written in treble clef with a key signature of one flat (B-flat) and a 2/4 time signature. The notes are G, A, B, C, D, E, F, E, D, C, B, A, G. The notes E and D are highlighted in blue.

French Horn

NATURAL MINOR SCALES

C Natural Minor Scale ("F" Concert Natural Minor)

Musical notation for the C Natural Minor Scale in 2/4 time. The scale is written on a treble clef staff with a key signature of two flats (Bb and Eb). The notes are C, D, Eb, E, F, G, Ab, Bb, C, D, Eb, E, F, G, Ab, Bb, C. The first and second octaves are shown, with the second octave ending with a double bar line.

F Natural Minor Scale ("Bb" Concert Natural Minor)

Musical notation for the F Natural Minor Scale in 2/4 time. The scale is written on a treble clef staff with a key signature of three flats (Bb, Eb, and Ab). The notes are F, G, Ab, A, Bb, C, Db, Eb, F, G, Ab, A, Bb, C, Db, Eb, F. The first and second octaves are shown, with the second octave ending with a double bar line.

Bb Natural Minor Scale ("Eb" Concert Natural Minor)

Musical notation for the Bb Natural Minor Scale in 2/4 time. The scale is written on a treble clef staff with a key signature of four flats (Bb, Eb, Ab, and Db). The notes are Bb, C, Db, D, Eb, F, Gb, Ab, Bb, C, Db, D, Eb, F, Gb, Ab, Bb. The first and second octaves are shown, with the second octave ending with a double bar line.

Eb Natural Minor Scale ("Ab" Concert Natural Minor)

Musical notation for the Eb Natural Minor Scale in 2/4 time. The scale is written on a treble clef staff with a key signature of five flats (Bb, Eb, Ab, Db, and Gb). The notes are Eb, F, Gb, G, Ab, Bb, Cb, Db, Eb, F, Gb, G, Ab, Bb, Cb, Db, Eb. The first and second octaves are shown, with the second octave ending with a double bar line.

Ab Natural Minor Scale ("Db" Concert Natural Minor)

Musical notation for the Ab Natural Minor Scale in 2/4 time. The scale is written on a treble clef staff with a key signature of six flats (Bb, Eb, Ab, Db, Gb, and Cb). The notes are Ab, Bb, Cb, C, Db, Eb, Fb, Gb, Ab, Bb, Cb, C, Db, Eb, Fb, Gb, Ab. The first and second octaves are shown, with the second octave ending with a double bar line.

C#/Db Natural Minor Scale ("Gb" Concert Natural Minor)

Musical notation for the C#/Db Natural Minor Scale in 2/4 time. The scale is written on a treble clef staff with a key signature of one sharp (F#) and five flats (Bb, Eb, Ab, Db, and Gb). The notes are C#, D, Eb, E, F, G, Ab, Bb, C#, D, Eb, E, F, G, Ab, Bb, C#. The first and second octaves are shown, with the second octave ending with a double bar line.

F# Natural Minor Scale ("B" Concert Natural Minor)

Musical notation for the F# Natural Minor Scale in 2/4 time. The scale is written on a treble clef staff with a key signature of two sharps (F# and C#) and five flats (Bb, Eb, Ab, Db, and Gb). The notes are F#, G, Ab, A, Bb, C, Db, Eb, F#, G, Ab, A, Bb, C, Db, Eb, F#. The first and second octaves are shown, with the second octave ending with a double bar line.

B Natural Minor Scale ("E" Concert Natural Minor)

Musical notation for the B Natural Minor Scale in 2/4 time. The scale is written on a treble clef staff with a key signature of two sharps (F# and C#) and four flats (Bb, Eb, Ab, and Db). The notes are B, C, Db, D, Eb, F, G, Ab, B, C, Db, D, Eb, F, G, Ab, B. The first and second octaves are shown, with the second octave ending with a double bar line.

E Natural Minor Scale ("A" Concert Natural Minor)

Musical notation for the E Natural Minor Scale in 2/4 time. The scale is written on a treble clef staff with a key signature of one sharp (F#) and four flats (Bb, Eb, Ab, and Db). The notes are E, F, G, Ab, A, Bb, C, Db, E, F, G, Ab, A, Bb, C, Db, E. The first and second octaves are shown, with the second octave ending with a double bar line.

A Natural Minor Scale ("D" Concert Natural Minor)

Musical notation for the A Natural Minor Scale in 2/4 time. The scale is written on a treble clef staff with a key signature of no sharps or flats. The notes are A, B, C, Db, D, Eb, F, G, A, B, C, Db, D, Eb, F, G, A. The first and second octaves are shown, with the second octave ending with a double bar line.

D Natural Minor Scale ("G" Concert Natural Minor)

Musical notation for the D Natural Minor Scale in 2/4 time. The scale is written on a treble clef staff with a key signature of two flats (Bb and Eb). The notes are D, E, F, G, Ab, A, Bb, C, D, E, F, G, Ab, A, Bb, C, D. The first and second octaves are shown, with the second octave ending with a double bar line.

G Natural Minor Scale ("C" Concert Natural Minor)

Musical notation for the G Natural Minor Scale in 2/4 time. The scale is written on a treble clef staff with a key signature of one flat (Bb). The notes are G, A, B, C, Db, D, Eb, E, G, A, B, C, Db, D, Eb, E, G. The first and second octaves are shown, with the second octave ending with a double bar line.

HARMONIC MINOR SCALES

C Harmonic Minor Scale ("F" Concert Harmonic Minor)



F Harmonic Minor Scale ("Bb" Concert Harmonic Minor)



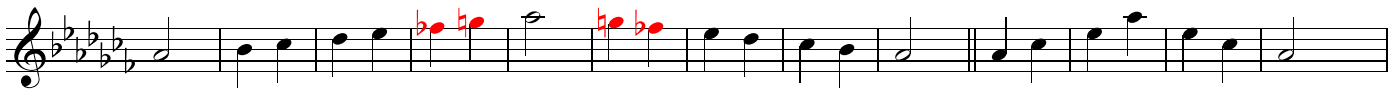
Bb Harmonic Minor Scale ("Eb" Concert Harmonic Minor)



Eb Harmonic Minor Scale ("Ab" Concert Harmonic Minor)



Ab Harmonic Minor Scale ("Db" Concert Harmonic Minor)



C#/Db Harmonic Minor Scale ("Gb" Concert Harmonic Minor)



F# Harmonic Minor Scale ("B" Concert Harmonic Minor)



B Harmonic Minor Scale ("E" Concert Harmonic Minor)



E Harmonic Minor Scale ("A" Concert Harmonic Minor)



A Harmonic Minor Scale ("D" Concert Harmonic Minor)



D Harmonic Minor Scale ("G" Concert Harmonic Minor)



G Harmonic Minor Scale ("C" Concert Harmonic Minor)



MELODIC MINOR SCALES

C Melodic Minor Scale ("F" Concert Melodic Minor)



F Melodic Minor Scale ("Bb" Concert Melodic Minor)



Bb Melodic Minor Scale ("Eb" Concert Melodic Minor)



Eb Melodic Minor Scale ("Ab" Concert Melodic Minor)



Ab Melodic Minor Scale ("Db" Concert Melodic Minor)



C#/Db Melodic Minor Scale ("Gb" Concert Melodic Minor)



F# Melodic Minor Scale ("B" Concert Melodic Minor)



B Melodic Minor Scale ("E" Concert Melodic Minor)



E Melodic Minor Scale ("A" Concert Melodic Minor)



A Melodic Minor Scale ("D" Concert Melodic Minor)



D Melodic Minor Scale ("G" Concert Melodic Minor)



G Melodic Minor Scale ("C" Concert Melodic Minor)



Trombone

NATURAL MINOR SCALES

C Natural Minor Scale

Musical notation for the C Natural Minor Scale in bass clef, 2/4 time. The scale is written as a sequence of eighth notes: C2, D2, E2, F2, G2, A2, B2, C3, D3, E3, F3, G3, A3, B3, C4. The notes B2 and F3 are marked with green accidentals (flats).

F Natural Minor Scale

Musical notation for the F Natural Minor Scale in bass clef, 2/4 time. The scale is written as a sequence of eighth notes: F2, G2, A2, Bb2, C3, D3, Eb3, F3, G3, A3, Bb3, C4, D4, Eb4, F4. The notes Bb2 and Bb3 are marked with green accidentals (flats).

Bb Natural Minor Scale

Musical notation for the Bb Natural Minor Scale in bass clef, 2/4 time. The scale is written as a sequence of eighth notes: Bb2, C3, D3, Eb3, F3, G3, Ab3, Bb3, C4, D4, Eb4, F4, G4, Ab4, Bb4. The notes Eb3 and Ab3 are marked with green accidentals (flats).

Eb Natural Minor Scale

Musical notation for the Eb Natural Minor Scale in bass clef, 2/4 time. The scale is written as a sequence of eighth notes: Eb2, F2, G2, Ab2, Bb2, C3, D3, Eb3, F3, G3, Ab3, Bb3, C4, D4, Eb4, F4. The notes Ab2 and Ab3 are marked with green accidentals (flats).

Ab Natural Minor Scale

Musical notation for the Ab Natural Minor Scale in bass clef, 2/4 time. The scale is written as a sequence of eighth notes: Ab2, Bb2, C3, D3, Eb3, F3, G3, Ab3, Bb3, C4, D4, Eb4, F4, G4, Ab4. The notes Eb3 and Ab3 are marked with green accidentals (flats).

C#/Db Natural Minor Scale

Musical notation for the C#/Db Natural Minor Scale in bass clef, 2/4 time. The scale is written as a sequence of eighth notes: C#2, D#2, E2, F#2, G2, A2, B2, C#3, D#3, E#3, F#3, G#3, A#3, B#3, C#4. The notes F#2 and F#3 are marked with green accidentals (sharps).

F# Natural Minor Scale

Musical notation for the F# Natural Minor Scale in bass clef, 2/4 time. The scale is written as a sequence of eighth notes: F#2, G#2, A2, B2, C#3, D#3, E#3, F#3, G#3, A#3, B#3, C#4, D#4, E#4, F#4. The notes B2 and B#3 are marked with green accidentals (sharps).

B Natural Minor Scale

Musical notation for the B Natural Minor Scale in bass clef, 2/4 time. The scale is written as a sequence of eighth notes: B2, C#3, D#3, E#3, F#3, G#3, A#3, B#3, C#4, D#4, E#4, F#4, G#4, A#4, B#4. The notes C#3 and C#4 are marked with green accidentals (sharps).

E Natural Minor Scale

Musical notation for the E Natural Minor Scale in bass clef, 2/4 time. The scale is written as a sequence of eighth notes: E2, F#2, G#2, A#2, B#2, C#3, D#3, E#3, F#3, G#3, A#3, B#3, C#4, D#4, E#4, F#4. The notes F#2 and F#3 are marked with green accidentals (sharps).

A Natural Minor Scale

Musical notation for the A Natural Minor Scale in bass clef, 2/4 time. The scale is written as a sequence of eighth notes: A2, B2, C#3, D#3, E#3, F#3, G#3, A#3, B#3, C#4, D#4, E#4, F#4, G#4, A#4. The notes C#3 and C#4 are marked with green accidentals (sharps).

D Natural Minor Scale

Musical notation for the D Natural Minor Scale in bass clef, 2/4 time. The scale is written as a sequence of eighth notes: D2, E2, F#2, G#2, A#2, B#2, C#3, D#3, E#3, F#3, G#3, A#3, B#3, C#4, D#4, E#4, F#4. The notes F#2 and F#3 are marked with green accidentals (sharps).

G Natural Minor Scale

Musical notation for the G Natural Minor Scale in bass clef, 2/4 time. The scale is written as a sequence of eighth notes: G2, A2, B2, C#3, D#3, E#3, F#3, G#3, A#3, B#3, C#4, D#4, E#4, F#4, G#4, A#4. The notes C#3 and C#4 are marked with green accidentals (sharps).

Trombone

HARMONIC MINOR SCALES

C Harmonic Minor Scale

Musical notation for the C Harmonic Minor Scale in bass clef, 2/4 time. The scale is written as a sequence of notes: C, D, E, F, G, A, Bb, Ab, G, F, E, D, C. The notes Bb and Ab are marked with red accidentals.

F Harmonic Minor Scale

Musical notation for the F Harmonic Minor Scale in bass clef, 2/4 time. The scale is written as a sequence of notes: F, G, Ab, Gb, F, E, D, C, Bb, Ab, G, F. The notes Gb and Bb are marked with red accidentals.

Bb Harmonic Minor Scale

Musical notation for the Bb Harmonic Minor Scale in bass clef, 2/4 time. The scale is written as a sequence of notes: Bb, C, D, Eb, D, C, Bb, Ab, G, F, Eb, D, C. The notes Eb and Ab are marked with red accidentals.

Eb Harmonic Minor Scale

Musical notation for the Eb Harmonic Minor Scale in bass clef, 2/4 time. The scale is written as a sequence of notes: Eb, F, G, Ab, G, F, Eb, D, C, Bb, Ab, G, F. The notes Ab and Bb are marked with red accidentals.

Ab Harmonic Minor Scale

Musical notation for the Ab Harmonic Minor Scale in bass clef, 2/4 time. The scale is written as a sequence of notes: Ab, Bb, C, D, Eb, D, C, Bb, Ab, G, F, Eb, D, C. The notes Eb and Ab are marked with red accidentals.

C#/Db Harmonic Minor Scale

Musical notation for the C#/Db Harmonic Minor Scale in bass clef, 2/4 time. The scale is written as a sequence of notes: C#, D, E, F, G, Ab, G, F, Eb, D, C, Bb, Ab, G, F. The notes Ab and Bb are marked with red accidentals.

F# Harmonic Minor Scale

Musical notation for the F# Harmonic Minor Scale in bass clef, 2/4 time. The scale is written as a sequence of notes: F#, G, Ab, Gb, F#, E, D, C, Bb, Ab, G, F. The notes Gb and Bb are marked with red accidentals.

B Harmonic Minor Scale

Musical notation for the B Harmonic Minor Scale in bass clef, 2/4 time. The scale is written as a sequence of notes: B, C, D, Eb, D, C, B, Ab, G, F, Eb, D, C. The notes Eb and Ab are marked with red accidentals.

E Harmonic Minor Scale

Musical notation for the E Harmonic Minor Scale in bass clef, 2/4 time. The scale is written as a sequence of notes: E, F, G, Ab, G, F, E, D, C, Bb, Ab, G, F. The notes Ab and Bb are marked with red accidentals.

A Harmonic Minor Scale

Musical notation for the A Harmonic Minor Scale in bass clef, 2/4 time. The scale is written as a sequence of notes: A, B, C, D, Eb, D, C, B, Ab, G, F, Eb, D, C. The notes Eb and Ab are marked with red accidentals.

D Harmonic Minor Scale

Musical notation for the D Harmonic Minor Scale in bass clef, 2/4 time. The scale is written as a sequence of notes: D, E, F, G, Ab, G, F, D, C, Bb, Ab, G, F. The notes Ab and Bb are marked with red accidentals.

G Harmonic Minor Scale

Musical notation for the G Harmonic Minor Scale in bass clef, 2/4 time. The scale is written as a sequence of notes: G, A, B, C, D, Eb, D, C, B, Ab, G, F, Eb, D, C. The notes Eb and Ab are marked with red accidentals.

Trombone

MELODIC MINOR SCALES

C Melodic Minor Scale



F Melodic Minor Scale



Bb Melodic Minor Scale



Eb Melodic Minor Scale



Ab Melodic Minor Scale



C#/Db Melodic Minor Scale



F# Melodic Minor Scale



B Melodic Minor Scale



E Melodic Minor Scale



A Melodic Minor Scale



D Melodic Minor Scale



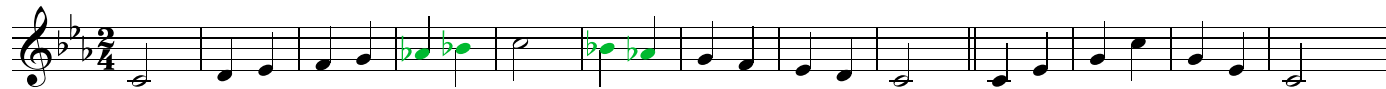
G Melodic Minor Scale



Baritone T.C.

NATURAL MINOR SCALES

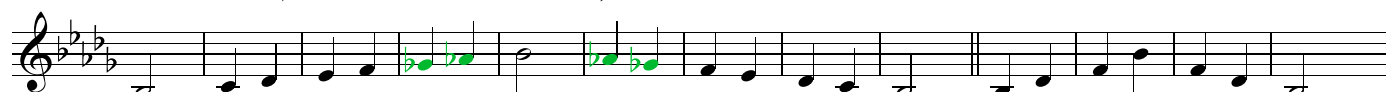
C Natural Minor Scale ("Bb" Concert Natural Minor)



F Natural Minor Scale ("Eb" Concert Natural Minor)



Bb Natural Minor Scale ("Ab" Concert Natural Minor)



Eb Natural Minor Scale ("Db" Concert Natural Minor)



Ab Natural Minor Scale ("Gb" Concert Natural Minor)



C#/Db Natural Minor Scale ("B" Concert Natural Minor)



F# Natural Minor Scale ("E" Concert Natural Minor)



B Natural Minor Scale ("A" Concert Natural Minor)



E Natural Minor Scale ("D" Concert Natural Minor)



A Natural Minor Scale ("G" Concert Natural Minor)



D Natural Minor Scale ("C" Concert Natural Minor)



G Natural Minor Scale ("F" Concert Natural Minor)



Baritone T.C. **HARMONIC MINOR SCALES**

C Harmonic Minor Scale ("Bb" Concert Harmonic Minor)



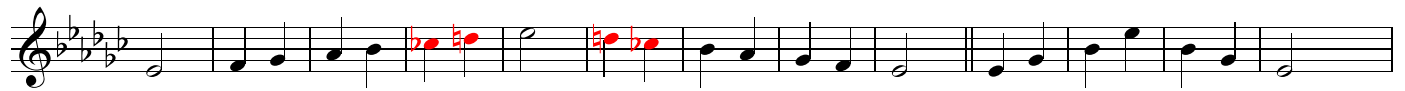
F Harmonic Minor Scale ("Eb" Concert Harmonic Minor)



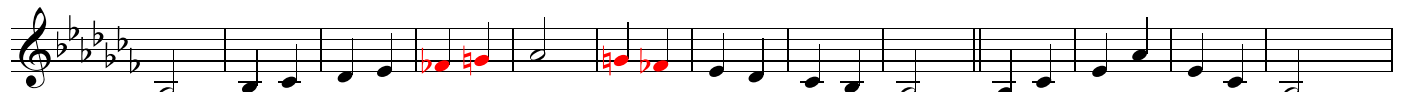
Bb Harmonic Minor Scale ("Ab" Concert Harmonic Minor)



Eb Harmonic Minor Scale ("Db" Concert Harmonic Minor)



Ab Harmonic Minor Scale ("Gb" Concert Harmonic Minor)



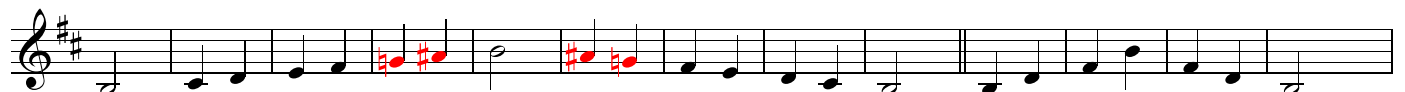
C#/Db Harmonic Minor Scale ("B" Concert Harmonic Minor)



F# Harmonic Minor Scale ("E" Concert Harmonic Minor)



B Harmonic Minor Scale ("A" Concert Harmonic Minor)



E Harmonic Minor Scale ("D" Concert Harmonic Minor)



A Harmonic Minor Scale ("G" Concert Harmonic Minor)



D Harmonic Minor Scale ("C" Concert Harmonic Minor)



G Harmonic Minor Scale ("F" Concert Harmonic Minor)



Baritone T.C. MELODIC MINOR SCALES

C Melodic Minor Scale ("Bb" Concert Melodic Minor)



F Melodic Minor Scale ("Eb" Concert Melodic Minor)



Bb Melodic Minor Scale ("Ab" Concert Melodic Minor)



Eb Melodic Minor Scale ("Db" Concert Melodic Minor)



Ab Melodic Minor Scale ("Gb" Concert Melodic Minor)



C#/Db Melodic Minor Scale ("B" Concert Melodic Minor)



F# Melodic Minor Scale ("E" Concert Melodic Minor)



B Melodic Minor Scale ("A" Concert Melodic Minor)



E Melodic Minor Scale ("D" Concert Melodic Minor)



A Melodic Minor Scale ("G" Concert Melodic Minor)



D Melodic Minor Scale ("C" Concert Melodic Minor)



G Melodic Minor Scale ("F" Concert Melodic Minor)



Tuba

NATURAL MINOR SCALES

C Natural Minor Scale

Musical notation for the C Natural Minor Scale in bass clef, 2/4 time. The scale is written in a single line with a key signature of two flats (Bb and Eb). The notes are C, D, Eb, F, G, Ab, Bb, C. The scale is presented in two measures: the first measure contains the first six notes (C, D, Eb, F, G, Ab) and the second measure contains the last two notes (Bb, C) followed by a double bar line.

F Natural Minor Scale

Musical notation for the F Natural Minor Scale in bass clef, 2/4 time. The scale is written in a single line with a key signature of three flats (Bb, Eb, and Ab). The notes are F, G, Ab, Bb, C, D, Eb, F. The scale is presented in two measures: the first measure contains the first six notes (F, G, Ab, Bb, C, D) and the second measure contains the last two notes (Eb, F) followed by a double bar line.

Bb Natural Minor Scale

Musical notation for the Bb Natural Minor Scale in bass clef, 2/4 time. The scale is written in a single line with a key signature of three flats (Bb, Eb, and Ab). The notes are Bb, C, D, Eb, F, G, Ab, Bb. The scale is presented in two measures: the first measure contains the first six notes (Bb, C, D, Eb, F, G) and the second measure contains the last two notes (Ab, Bb) followed by a double bar line.

Eb Natural Minor Scale

Musical notation for the Eb Natural Minor Scale in bass clef, 2/4 time. The scale is written in a single line with a key signature of four flats (Bb, Eb, Ab, and Db). The notes are Eb, F, G, Ab, Bb, C, D, Eb. The scale is presented in two measures: the first measure contains the first six notes (Eb, F, G, Ab, Bb, C) and the second measure contains the last two notes (D, Eb) followed by a double bar line.

Ab Natural Minor Scale

Musical notation for the Ab Natural Minor Scale in bass clef, 2/4 time. The scale is written in a single line with a key signature of four flats (Bb, Eb, Ab, and Db). The notes are Ab, Bb, C, D, Eb, F, G, Ab. The scale is presented in two measures: the first measure contains the first six notes (Ab, Bb, C, D, Eb, F) and the second measure contains the last two notes (G, Ab) followed by a double bar line.

C#/Db Natural Minor Scale

Musical notation for the C#/Db Natural Minor Scale in bass clef, 2/4 time. The scale is written in a single line with a key signature of five flats (Bb, Eb, Ab, Db, and Fb). The notes are C#, D, Eb, F, G, Ab, Bb, C#. The scale is presented in two measures: the first measure contains the first six notes (C#, D, Eb, F, G, Ab) and the second measure contains the last two notes (Bb, C#) followed by a double bar line.

F# Natural Minor Scale

Musical notation for the F# Natural Minor Scale in bass clef, 2/4 time. The scale is written in a single line with a key signature of one sharp (F#). The notes are F#, G, Ab, Bb, C, D, Eb, F#. The scale is presented in two measures: the first measure contains the first six notes (F#, G, Ab, Bb, C, D) and the second measure contains the last two notes (Eb, F#) followed by a double bar line.

B Natural Minor Scale

Musical notation for the B Natural Minor Scale in bass clef, 2/4 time. The scale is written in a single line with a key signature of two sharps (F# and C#). The notes are B, C, D, Eb, F, G, Ab, B. The scale is presented in two measures: the first measure contains the first six notes (B, C, D, Eb, F, G) and the second measure contains the last two notes (Ab, B) followed by a double bar line.

E Natural Minor Scale

Musical notation for the E Natural Minor Scale in bass clef, 2/4 time. The scale is written in a single line with a key signature of one sharp (F#). The notes are E, F, G, Ab, Bb, C, D, E. The scale is presented in two measures: the first measure contains the first six notes (E, F, G, Ab, Bb, C) and the second measure contains the last two notes (D, E) followed by a double bar line.

A Natural Minor Scale

Musical notation for the A Natural Minor Scale in bass clef, 2/4 time. The scale is written in a single line with a key signature of no sharps or flats. The notes are A, B, C, D, Eb, F, G, A. The scale is presented in two measures: the first measure contains the first six notes (A, B, C, D, Eb, F) and the second measure contains the last two notes (G, A) followed by a double bar line.

D Natural Minor Scale

Musical notation for the D Natural Minor Scale in bass clef, 2/4 time. The scale is written in a single line with a key signature of two flats (Bb and Eb). The notes are D, E, F, G, Ab, Bb, C, D. The scale is presented in two measures: the first measure contains the first six notes (D, E, F, G, Ab, Bb) and the second measure contains the last two notes (C, D) followed by a double bar line.

G Natural Minor Scale

Musical notation for the G Natural Minor Scale in bass clef, 2/4 time. The scale is written in a single line with a key signature of one flat (Bb). The notes are G, A, B, C, D, Eb, F, G. The scale is presented in two measures: the first measure contains the first six notes (G, A, B, C, D, Eb) and the second measure contains the last two notes (F, G) followed by a double bar line.

Tuba

HARMONIC MINOR SCALES

C Harmonic Minor Scale

Musical notation for the C Harmonic Minor Scale in bass clef, 2/4 time. The scale is written in two measures: the first measure contains the notes C, D, E, F, G, A, Bb, and the second measure contains the notes Ab, G, F, E, D, C. The notes Bb and Ab are highlighted in red.

F Harmonic Minor Scale

Musical notation for the F Harmonic Minor Scale in bass clef, 2/4 time. The scale is written in two measures: the first measure contains the notes F, G, Ab, Bb, C, D, Eb, and the second measure contains the notes D, C, Bb, Ab, G, F. The notes Bb and Eb are highlighted in red.

Bb Harmonic Minor Scale

Musical notation for the Bb Harmonic Minor Scale in bass clef, 2/4 time. The scale is written in two measures: the first measure contains the notes Bb, C, D, Eb, F, G, Ab, and the second measure contains the notes G, F, Eb, D, C, Bb. The notes Ab and Eb are highlighted in red.

Eb Harmonic Minor Scale

Musical notation for the Eb Harmonic Minor Scale in bass clef, 2/4 time. The scale is written in two measures: the first measure contains the notes Eb, F, G, Ab, Bb, C, D, and the second measure contains the notes D, C, Bb, Ab, G, F. The notes Ab and Bb are highlighted in red.

Ab Harmonic Minor Scale

Musical notation for the Ab Harmonic Minor Scale in bass clef, 2/4 time. The scale is written in two measures: the first measure contains the notes Ab, Bb, C, D, Eb, F, G, and the second measure contains the notes G, F, Eb, D, C, Bb. The notes Eb and Bb are highlighted in red.

C#/Db Harmonic Minor Scale

Musical notation for the C#/Db Harmonic Minor Scale in bass clef, 2/4 time. The scale is written in two measures: the first measure contains the notes C#, D, Eb, F, G, Ab, B, and the second measure contains the notes B, Ab, G, F, Eb, D, C#. The notes Eb and Ab are highlighted in red.

F# Harmonic Minor Scale

Musical notation for the F# Harmonic Minor Scale in bass clef, 2/4 time. The scale is written in two measures: the first measure contains the notes F#, G, Ab, B, C, D, Eb, and the second measure contains the notes D, C, B, Ab, G, F#. The notes Ab and Eb are highlighted in red.

B Harmonic Minor Scale

Musical notation for the B Harmonic Minor Scale in bass clef, 2/4 time. The scale is written in two measures: the first measure contains the notes B, C, D, Eb, F, G, Ab, and the second measure contains the notes G, F, Eb, D, C, B. The notes Ab and Eb are highlighted in red.

E Harmonic Minor Scale

Musical notation for the E Harmonic Minor Scale in bass clef, 2/4 time. The scale is written in two measures: the first measure contains the notes E, F, G, Ab, B, C, D, and the second measure contains the notes D, C, B, Ab, G, F. The notes Ab and B are highlighted in red.

A Harmonic Minor Scale

Musical notation for the A Harmonic Minor Scale in bass clef, 2/4 time. The scale is written in two measures: the first measure contains the notes A, B, C, D, Eb, F, G, and the second measure contains the notes G, F, Eb, D, C, B. The notes Eb and F are highlighted in red.

D Harmonic Minor Scale

Musical notation for the D Harmonic Minor Scale in bass clef, 2/4 time. The scale is written in two measures: the first measure contains the notes D, E, F, G, Ab, B, and the second measure contains the notes B, Ab, G, F, Eb, D. The notes Ab and Eb are highlighted in red.

G Harmonic Minor Scale

Musical notation for the G Harmonic Minor Scale in bass clef, 2/4 time. The scale is written in two measures: the first measure contains the notes G, A, B, C, D, Eb, and the second measure contains the notes D, C, B, Ab, G, F. The notes Eb and Ab are highlighted in red.

Tuba

MELODIC MINOR SCALES

C Melodic Minor Scale

Musical notation for the C Melodic Minor Scale in bass clef, 2/4 time. The scale is written in two measures: the first measure contains the ascending scale (C, D, E, F, G, A, Bb, A, G, F, E, D, C) and the second measure contains the descending scale (C, Bb, A, G, F, E, D, C). The notes Bb and A are highlighted in blue.

F Melodic Minor Scale

Musical notation for the F Melodic Minor Scale in bass clef, 2/4 time. The scale is written in two measures: the first measure contains the ascending scale (F, G, Ab, Bb, C, D, Eb, D, C, Bb, Ab, G, F) and the second measure contains the descending scale (F, Eb, D, C, Bb, Ab, G, F). The notes Ab and Bb are highlighted in blue.

Bb Melodic Minor Scale

Musical notation for the Bb Melodic Minor Scale in bass clef, 2/4 time. The scale is written in two measures: the first measure contains the ascending scale (Bb, C, D, Eb, F, G, Ab, G, F, Eb, D, C, Bb) and the second measure contains the descending scale (Bb, Ab, G, F, Eb, D, C, Bb). The notes Ab and G are highlighted in blue.

Eb Melodic Minor Scale

Musical notation for the Eb Melodic Minor Scale in bass clef, 2/4 time. The scale is written in two measures: the first measure contains the ascending scale (Eb, F, G, Ab, Bb, C, D, C, Bb, Ab, G, F, Eb) and the second measure contains the descending scale (Eb, D, C, Bb, Ab, G, F, Eb). The notes Ab and Bb are highlighted in blue.

Ab Melodic Minor Scale

Musical notation for the Ab Melodic Minor Scale in bass clef, 2/4 time. The scale is written in two measures: the first measure contains the ascending scale (Ab, Bb, C, D, Eb, F, G, F, Eb, D, C, Bb, Ab) and the second measure contains the descending scale (Ab, G, F, Eb, D, C, Bb, Ab). The notes Eb and F are highlighted in blue.

C#/Db Melodic Minor Scale

Musical notation for the C#/Db Melodic Minor Scale in bass clef, 2/4 time. The scale is written in two measures: the first measure contains the ascending scale (C#, D, Eb, F, G, Ab, Bb, Ab, G, F, Eb, D, C#) and the second measure contains the descending scale (C#, Bb, Ab, G, F, Eb, D, C#). The notes Ab and Bb are highlighted in blue.

F# Melodic Minor Scale

Musical notation for the F# Melodic Minor Scale in bass clef, 2/4 time. The scale is written in two measures: the first measure contains the ascending scale (F#, G, Ab, Bb, C, D, Eb, D, C, Bb, Ab, G, F#) and the second measure contains the descending scale (F#, Eb, D, C, Bb, Ab, G, F#). The notes Ab and Bb are highlighted in blue.

B Melodic Minor Scale

Musical notation for the B Melodic Minor Scale in bass clef, 2/4 time. The scale is written in two measures: the first measure contains the ascending scale (B, C, D, Eb, F, G, Ab, G, F, Eb, D, C, B) and the second measure contains the descending scale (B, Ab, G, F, Eb, D, C, B). The notes Ab and G are highlighted in blue.

E Melodic Minor Scale

Musical notation for the E Melodic Minor Scale in bass clef, 2/4 time. The scale is written in two measures: the first measure contains the ascending scale (E, F, G, Ab, Bb, C, D, C, Bb, Ab, G, F, E) and the second measure contains the descending scale (E, D, C, Bb, Ab, G, F, E). The notes Ab and Bb are highlighted in blue.

A Melodic Minor Scale

Musical notation for the A Melodic Minor Scale in bass clef, 2/4 time. The scale is written in two measures: the first measure contains the ascending scale (A, B, C, D, Eb, F, G, F, Eb, D, C, B, A) and the second measure contains the descending scale (A, G, F, Eb, D, C, B, A). The notes Eb and F are highlighted in blue.

D Melodic Minor Scale

Musical notation for the D Melodic Minor Scale in bass clef, 2/4 time. The scale is written in two measures: the first measure contains the ascending scale (D, E, F, G, Ab, Bb, C, B, Ab, G, F, E, D) and the second measure contains the descending scale (D, Bb, Ab, G, F, E, D). The notes Ab and Bb are highlighted in blue.

G Melodic Minor Scale

Musical notation for the G Melodic Minor Scale in bass clef, 2/4 time. The scale is written in two measures: the first measure contains the ascending scale (G, A, B, C, D, Eb, F, E, D, C, B, A, G) and the second measure contains the descending scale (G, F, Eb, D, C, B, A, G). The notes Eb and F are highlighted in blue.

NATURAL MINOR SCALES

C Natural Minor Scale

Musical notation for the C Natural Minor Scale in 2/4 time. The scale is written on a single staff with a treble clef and a key signature of three flats (Bb, Eb, Ab). The notes are C4, D4, Eb4, E4, F4, G4, Ab4, A4, Bb4, B4, C5. The first octave is played ascending and descending, followed by a second octave ascending and descending. Green accidentals (flats) are placed above the notes Eb, Ab, and Bb.

F Natural Minor Scale

Musical notation for the F Natural Minor Scale in 2/4 time. The scale is written on a single staff with a treble clef and a key signature of two flats (Bb, Eb). The notes are F4, G4, Ab4, A4, Bb4, C5, D5, Eb5, E5, F5. The first octave is played ascending and descending, followed by a second octave ascending and descending. Green accidentals (flats) are placed above the notes Ab, Bb, and Eb.

Bb Natural Minor Scale

Musical notation for the Bb Natural Minor Scale in 2/4 time. The scale is written on a single staff with a treble clef and a key signature of three flats (Bb, Eb, Ab). The notes are Bb4, C5, D5, Eb5, E5, F5, G5, Ab5, A5, Bb5. The first octave is played ascending and descending, followed by a second octave ascending and descending. Green accidentals (flats) are placed above the notes Eb, Ab, and Bb.

Eb Natural Minor Scale

Musical notation for the Eb Natural Minor Scale in 2/4 time. The scale is written on a single staff with a treble clef and a key signature of four flats (Bb, Eb, Ab, Db). The notes are Eb4, F4, G4, Ab4, A4, Bb4, C5, Db5, D5, Eb5. The first octave is played ascending and descending, followed by a second octave ascending and descending. Green accidentals (flats) are placed above the notes Ab, Bb, and Db.

Ab Natural Minor Scale

Musical notation for the Ab Natural Minor Scale in 2/4 time. The scale is written on a single staff with a treble clef and a key signature of four flats (Bb, Eb, Ab, Db). The notes are Ab4, Bb4, C5, Db5, D5, Eb5, F5, G5, Ab5, Bb5. The first octave is played ascending and descending, followed by a second octave ascending and descending. Green accidentals (flats) are placed above the notes Bb, Db, and Eb.

C#/Db Natural Minor Scale

Musical notation for the C#/Db Natural Minor Scale in 2/4 time. The scale is written on a single staff with a treble clef and a key signature of three sharps (F#, C#, G#). The notes are C#4, D4, E4, F#4, G4, A4, B4, C#5, D5, E5, F#5. The first octave is played ascending and descending, followed by a second octave ascending and descending. Green accidentals (sharps) are placed above the notes F#, C#, and G#.

F# Natural Minor Scale

Musical notation for the F# Natural Minor Scale in 2/4 time. The scale is written on a single staff with a treble clef and a key signature of two sharps (F#, C#). The notes are F#4, G4, A4, B4, C#5, D5, E5, F#5, G5, A5, B5. The first octave is played ascending and descending, followed by a second octave ascending and descending. Green accidentals (sharps) are placed above the notes B and C#.

B Natural Minor Scale

Musical notation for the B Natural Minor Scale in 2/4 time. The scale is written on a single staff with a treble clef and a key signature of two sharps (F#, C#). The notes are B4, C5, D5, E5, F#5, G5, A5, B5, C#6, D6, E6, F#6. The first octave is played ascending and descending, followed by a second octave ascending and descending. Green accidentals (sharps) are placed above the notes C# and F#.

E Natural Minor Scale

Musical notation for the E Natural Minor Scale in 2/4 time. The scale is written on a single staff with a treble clef and a key signature of one sharp (F#). The notes are E4, F4, G4, A4, B4, C#5, D5, E5, F#5, G5, A5, B5. The first octave is played ascending and descending, followed by a second octave ascending and descending. Green accidentals (sharps) are placed above the notes C# and F#.

A Natural Minor Scale

Musical notation for the A Natural Minor Scale in 2/4 time. The scale is written on a single staff with a treble clef and a key signature of no sharps or flats. The notes are A4, B4, C5, D5, E5, F#5, G5, A5, B5, C#6, D6, E6, F#6. The first octave is played ascending and descending, followed by a second octave ascending and descending. Green accidentals (sharps) are placed above the notes C# and F#.

D Natural Minor Scale

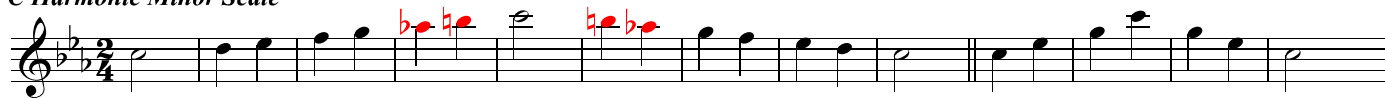
Musical notation for the D Natural Minor Scale in 2/4 time. The scale is written on a single staff with a treble clef and a key signature of two flats (Bb, Eb). The notes are D4, E4, F4, G4, Ab4, A4, Bb4, C5, D5, Eb5, E5, F5, G5, Ab5, A5, Bb5, C6, D6. The first octave is played ascending and descending, followed by a second octave ascending and descending. Green accidentals (flats) are placed above the notes Ab, Bb, and Eb.

G Natural Minor Scale

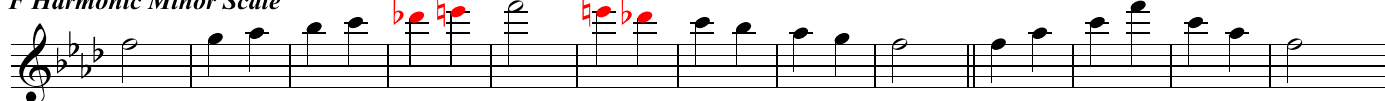
Musical notation for the G Natural Minor Scale in 2/4 time. The scale is written on a single staff with a treble clef and a key signature of one flat (Bb). The notes are G4, A4, Bb4, B4, C5, D5, Eb5, E5, F5, G5, Ab5, A5, Bb5, C6, D6, Eb6, E6, F6, G6. The first octave is played ascending and descending, followed by a second octave ascending and descending. Green accidentals (flats) are placed above the notes Bb and Eb.

HARMONIC MINOR SCALES

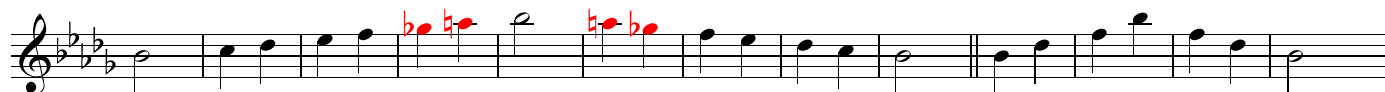
C Harmonic Minor Scale



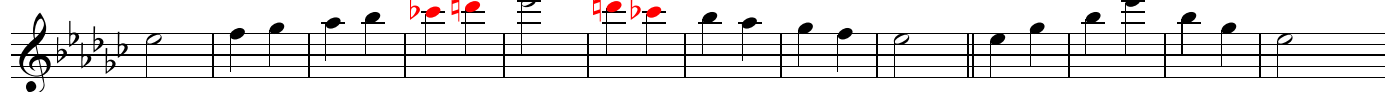
F Harmonic Minor Scale



Bb Harmonic Minor Scale



Eb Harmonic Minor Scale



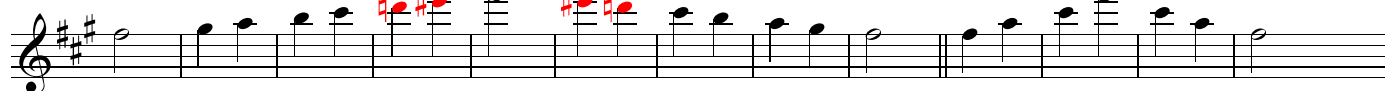
Ab Harmonic Minor Scale



C#/Db Harmonic Minor Scale



F# Harmonic Minor Scale



B Harmonic Minor Scale



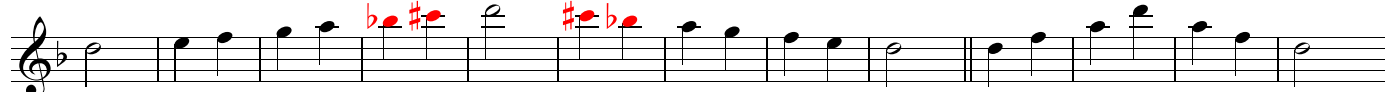
E Harmonic Minor Scale



A Harmonic Minor Scale



D Harmonic Minor Scale



G Harmonic Minor Scale



Xylophone

MELODIC MINOR SCALES

C Melodic Minor Scale



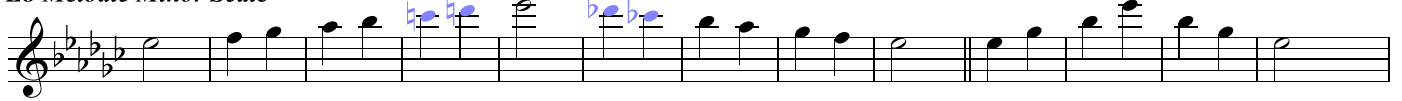
F Melodic Minor Scale



Bb Melodic Minor Scale



Eb Melodic Minor Scale



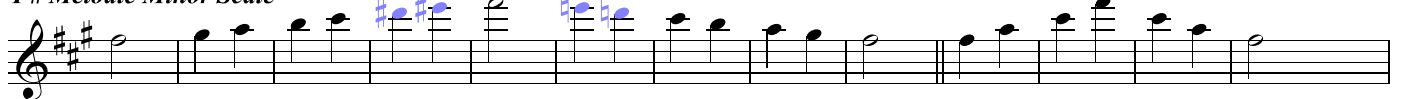
Ab Melodic Minor Scale



C#/Db Melodic Minor Scale



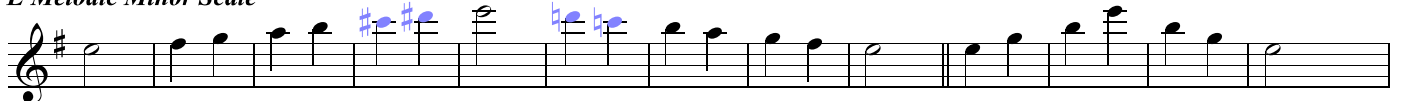
F# Melodic Minor Scale



B Melodic Minor Scale



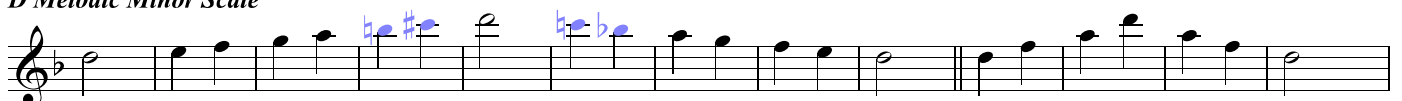
E Melodic Minor Scale



A Melodic Minor Scale



D Melodic Minor Scale



G Melodic Minor Scale

