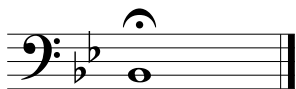


# Fundamentals For Beginning Band

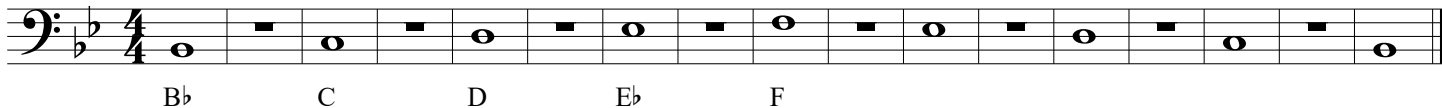
Trombone  
Baritone

## #1 Starting Note

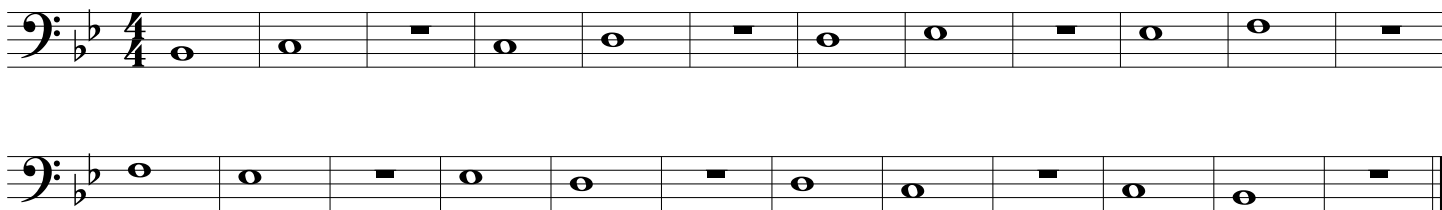


## #2.01 Long Tones

*stop-2-3-breathe*



## #2.02 Long Tones



## #3 Articulation



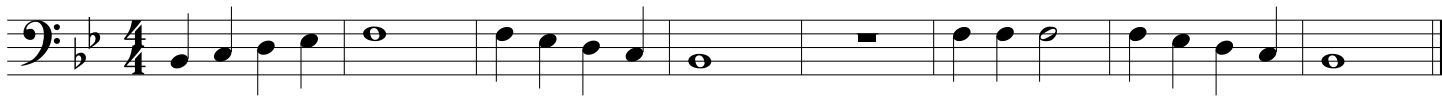
## #4 Scale



## #5 Slurs



## #6 Duet, part one



## #7 Duet, part two



## #8 Flexibility

