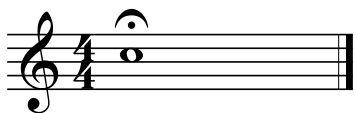
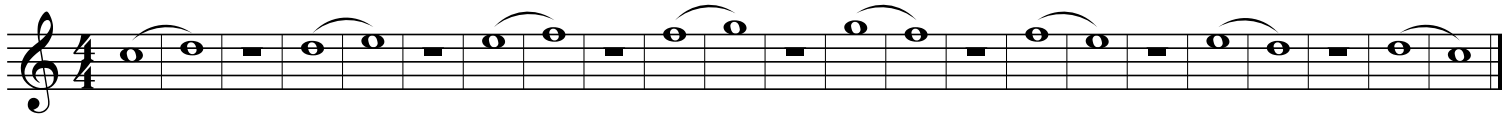


1. Starting Note



2. Long Tones

stop-2-3-breathe



3. Expanding Intervals

stop-2-3-breathe



4. Flexibility



5.01 Six-Note Scale in Bb



Fundamentals For Band

5.02 Six-Note Scale in Eb

Musical notation for a six-note scale in Eb major, 4/4 time. The scale is written on a single staff in treble clef. It consists of two measures of an ascending scale (Eb, F, G, Ab, Bb, C) and two measures of a descending scale (C, Bb, Ab, G, F, Eb).

5.03 Six-Note Scale in F

Musical notation for a six-note scale in F major, 4/4 time. The scale is written on a single staff in treble clef. It consists of two measures of an ascending scale (F, G, A, Bb, C, D) and two measures of a descending scale (D, C, Bb, A, G, F).

5.04 Six-Note Scale in G Minor

Musical notation for a six-note scale in G minor, 4/4 time. The scale is written on a single staff in treble clef. It consists of two measures of an ascending scale (G, A, Bb, C, D, Eb) and two measures of a descending scale (Eb, D, C, Bb, A, G).

6. Chromatic Scale

Musical notation for a chromatic scale, 4/4 time. The scale is written on a single staff in treble clef. It consists of two measures of an ascending chromatic scale (A, Bb, B, C, C#, D, Eb, E, F, F#, G, G#, A) and two measures of a descending chromatic scale (A, Bb, B, C, C#, D, Eb, E).

A B \flat B C C \sharp D E \flat E F F \sharp G G \sharp A B \flat B C C \sharp D E \flat E

7. Etude

Musical notation for an etude, 4/4 time. The piece is written on a single staff in treble clef. It features a series of eighth notes and quarter notes, with some notes beamed together. There are two horizontal lines below the staff, likely indicating fingerings or breath marks.

8. Technical Etude

Musical notation for a technical etude, 4/4 time. The piece is written on four staves in treble clef. It features a series of eighth notes and quarter notes, with some notes beamed together. The etude is designed to be played on a single staff.

Happy Birthday

Musical notation for the song 'Happy Birthday', 3/4 time. The piece is written on a single staff in treble clef. It features a series of quarter notes and eighth notes, with some notes beamed together.