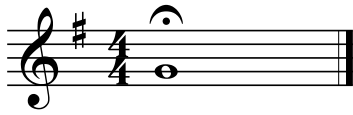


Fundamentals For Band

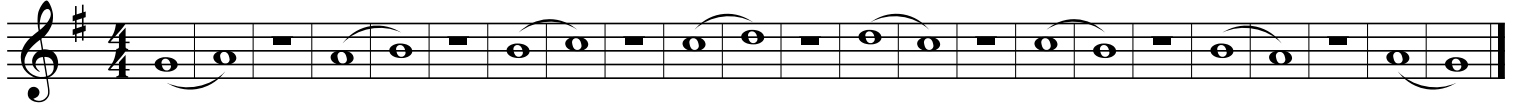
Listen
Count
Tap
Breathe
Watch
Have Fun

1. Starting Note



2. Long Tones

stop-2-3-breathe



3. Expanding Intervals

stop-2-3-breathe



4. Flexibility



5.01 Six-Note Scale in Bb



Fundamentals For Band

5.02 Six-Note Scale in Eb

Musical notation for a six-note scale in Eb major, 4/4 time. The scale is written on a single staff in treble clef. It consists of the notes Eb, F, G, Ab, Bb, and C, ascending and then descending.

5.03 Six-Note Scale in F

Musical notation for a six-note scale in F major, 4/4 time. The scale is written on a single staff in treble clef. It consists of the notes F, G, A, Bb, C, and D, ascending and then descending.

5.04 Six-Note Scale in G Minor

Musical notation for a six-note scale in G minor, 4/4 time. The scale is written on a single staff in treble clef. It consists of the notes G, Ab, Bb, C, D, and Eb, ascending and then descending.

6. Chromatic Scale

Musical notation for a chromatic scale, 4/4 time. The scale is written on a single staff in treble clef. It consists of the notes E, F, F#, G, G#, A, Bb, B, C, C#, D, D#, E, F, F#, G, G#, A, Bb, B, ascending and then descending.

E F F# G G# A B \flat B C C# D D# E F F# G G# A B \flat B

7. Etude

Musical notation for an etude, 4/4 time. The piece is written on a single staff in treble clef. It features a series of eighth and sixteenth notes, with a final measure containing a half note and a whole note.

8. Technical Etude

Musical notation for a technical etude, 4/4 time. The piece is written on four staves in treble clef. It features a series of eighth and sixteenth notes, with a final measure containing a half note and a whole note.

Happy Birthday

Musical notation for the song 'Happy Birthday', 3/4 time. The piece is written on a single staff in treble clef. It features a series of eighth and sixteenth notes, with a final measure containing a half note and a whole note.