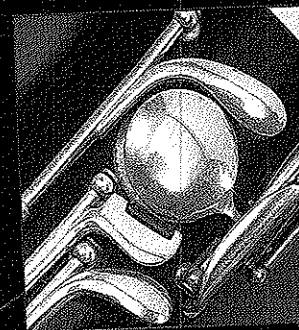
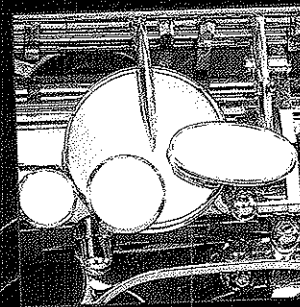
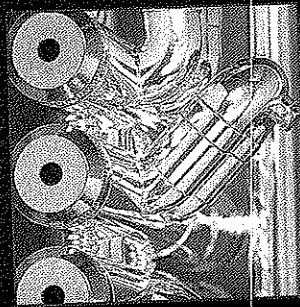
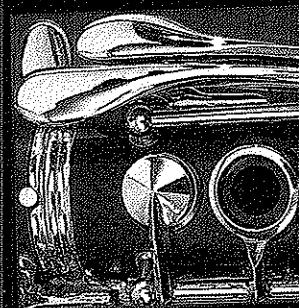
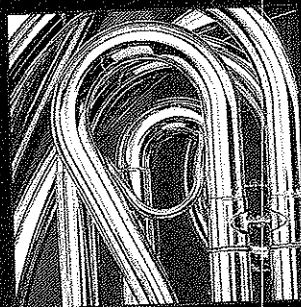
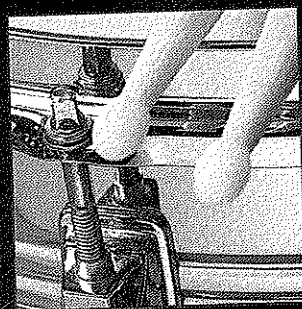
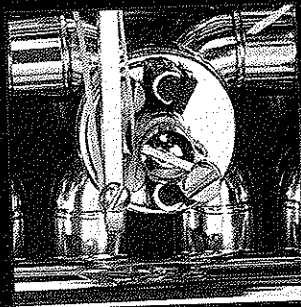
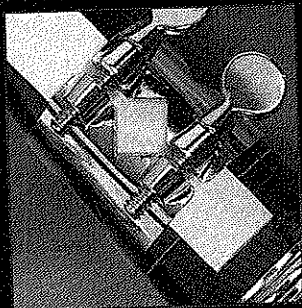
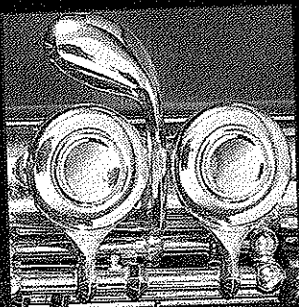


FOUNDATIONS FOR SUPERIOR PERFORMANCE

Warm-Ups & Technique for Band

Richard Williams & Jeff King



KJOS

NEIL A. KJOS
MUSIC COMPANY
PUBLISHER

B \flat Trumpet Fingering Chart

(Notes on gray background are pedal tones -- younger players should use 1 2 3 for all pedal tones.)

C	C \sharp D \flat	D	D \sharp E \flat	E	F
Open	1 2 3	1 3	2 3	1 2	1

F \sharp G \flat	G	G \sharp A \flat	A	A \sharp B \flat	B
1 2 3	1 3	2 3	1 2 or 3	1	2

C	C \sharp D \flat	D	D \sharp E \flat	E	F
Open	1 2 3	1 3	2 3	1 2 or 3	1

F \sharp G \flat	G	G \sharp A \flat	A	A \sharp B \flat	B
2 or 1 2 3	Open or 1 3	2 3	1 2 or 3	1 or 1 2 3	2 or 1 3

C	C \sharp D \flat	D	D \sharp E \flat	E	F
Open or 2 3	1 2 or 3	1 or 1 3	2 or 2 3	Open or 1 2	1

F \sharp G \flat	G	G \sharp A \flat	A	A \sharp B \flat	B
2	Open or 1 3	2 3	1 2 or 3	1	2

C	C \sharp D \flat	D	D \sharp E \flat	E	F
Open	2 or 1 2	Open or 1	2	Open	1

(When more than one fingering is shown, the first is the most common.)

Foundations for Superior Performance

Warm-Ups and Technique for Band

by Richard Williams and Jeff King

A comprehensive and sequential book of warm-ups, scales, technical patterns, chord studies, tuning exercises, and chorales for concert band.

Designed to organize the daily rehearsal and advance the performance level of the ensemble.

Practical and efficient exercises in all twelve major keys developed in the classroom.

Table of Contents

Section 1: Warm-Ups

• Concert F Around the Band	2
• Articulation Exercises	3
• Long Tones	4-5
• Warm-Up Sets 1 through 4	6-9

Section 2: Technique

Major and minor scales, mini-scales, scale patterns, scales in thirds, intervals, triads, and chord studies.

• Concert B \flat	10-11
• Concert F	12-13
• Concert C	14-15
• Concert G	16-17
• Concert D	18
• Concert A	19
• Concert E	20
• Concert B	21
• Concert G \flat	22-23
• Concert D \flat	24-25
• Concert A \flat	26-27
• Concert E \flat	28-29

Section 3: Chorales and Tuning Exercises

Interval tuning, chord tuning, and chorales

• Concert B \flat	30-31
• Concert F	32-33
• Concert E \flat	34-35
• Concert C	36
• Concert c minor	37
• Concert G	38
• Concert g minor	39
• Concert A \flat	40

Appendix:

• Circle of Fifths	41
• One Octave Scales and Arpeggios	42
• Full Range Scales	44
• Chromatic Scales	46
• Major Arpeggios and Inversions	48

ISBN 0-8497-7010-6

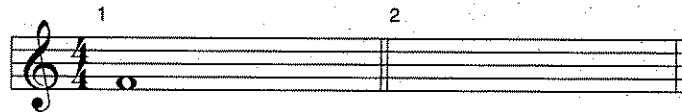
©1997 Neil A. Kjos Music Company, 4380 Jutland Drive, San Diego, California 92117
International copyright secured. All rights reserved. Printed in U.S.A.

Warning! These arrangements are protected by copyright law. To copy or reproduce them by any method is an infringement of the copyright law. Anyone who reproduces copyrighted matter is subject to substantial penalties and assessments for each infringement.

Concert F Around The Band

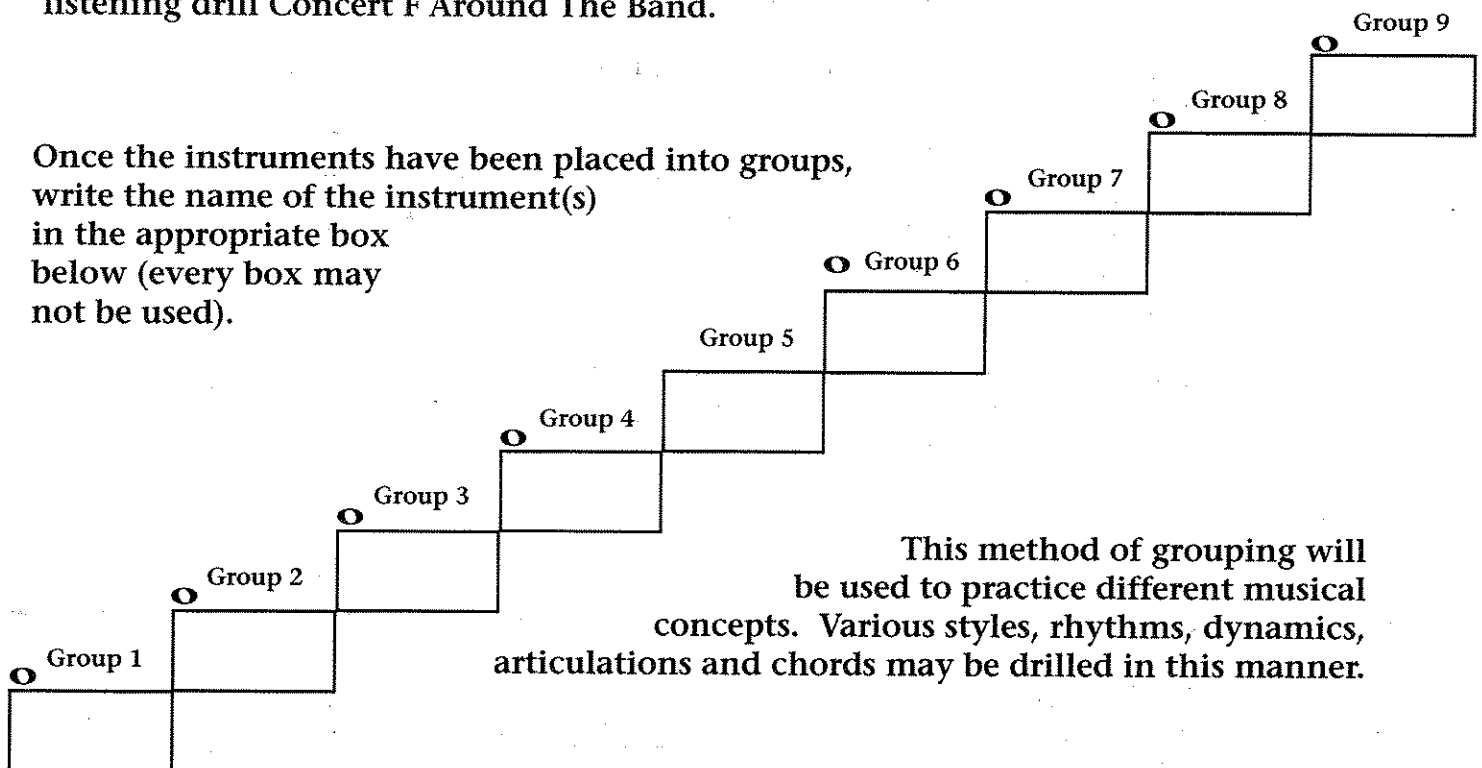
Each instrument will play concert F in their middle register. As a trumpeter, you will need to transpose the concert F in measure one to your instrument's pitch in measure two.

The transposition for cornet/trumpet is up a major second.



Your director will divide the band into various sections or groups for the listening drill Concert F Around The Band.

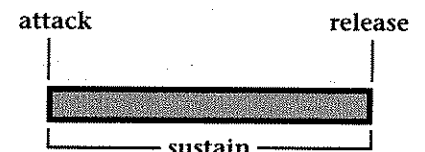
Once the instruments have been placed into groups, write the name of the instrument(s) in the appropriate box below (every box may not be used).



This method of grouping will be used to practice different musical concepts. Various styles, rhythms, dynamics, articulations and chords may be drilled in this manner.

As you play the exercise, keep the following concepts in mind:

- match the primary parts of each note (attack-sustain-release)
- work for a smooth shape to each note (no bumps in the sound)
- hand off tenuto notes (full value) without creating "holes" between the attacks
- match intonation, intensity, volume, tone quality, and the "body of sound"
- be aware of the different colors (timbres) of the instrument groups and their location in the room
- listen from the bottom groups and balance low-middle-high



Articulation Exercises

Articulations: A Study in Styles

Four connected quarter-notes (tenuto). The sound of one note "touches" the next note.

Four quarter-notes in "lifted" style. The attack is the same as tenuto, but the end of the note is tapered.

Four quarter-notes "lifted and short" (staccato). Separated and detached (half full value).

Eighth-notes in connected style.

Eighth-notes in lifted and short style.

Eighth-note triplets in connected style.

Eighth-note triplets in a detached style (bounced).

Sixteenth-notes in a connected style.

Articulation Exercise on Concert F

Long Tones

Concert F Descending

1

First staff of exercise 1: Treble clef, common time. Notes: G4 (1), F#4 (2), E4 (3), D4 (4), C4 (5), B3 (6), A3 (7). Rest for 8 measures.

Second staff of exercise 1: Treble clef, common time. Notes: G3 (8), F3 (9), E3 (10), D3 (11), C3 (12), B2 (13), A2 (14). Ends with a double bar line.

2

Exercise 2: Treble clef, common time. Notes: G4 (1), F#4 (2), E4 (3), D4 (4), C4 (5), B3 (6), A3 (7). Ends with a double bar line.

Long Tone 1

1a

First staff of exercise 1a: Treble clef, common time. Notes: G4 (1), F#4 (2), E4 (3), D4 (4), C4 (5), B3 (6), A3 (7). Rest for 8 measures.

Second staff of exercise 1a: Treble clef, common time. Notes: G3 (8), F3 (9), E3 (10), D3 (11), C3 (12), B2 (13), A2 (14). Ends with a double bar line.

1b

First staff of exercise 1b: Treble clef, common time. Notes: G4 (1), F4 (2), E4 (3), D4 (4), C4 (5), B3 (6), A3 (7). Rest for 8 measures.

Second staff of exercise 1b: Treble clef, common time. Notes: G3 (8), F3 (9), E3 (10), D3 (11), C3 (12), B2 (13), A2 (14). Ends with a double bar line.

1c

First staff of exercise 1c: Treble clef, common time. Notes: G4 (1), F4 (2), E4 (3), D4 (4), C4 (5). Rest for 6 measures.

Second staff of exercise 1c: Treble clef, common time. Notes: G3 (6), F3 (7), E3 (8), D3 (9), C3 (10). Ends with a double bar line.

1d

First staff of exercise 1d: Treble clef, common time. Notes: G4 (1), F4 (2), E4 (3), D4 (4), C4 (5), B3 (6). Rest for 7 measures.

Second staff of exercise 1d: Treble clef, common time. Notes: G3 (7), F3 (8), E3 (9), D3 (10), C3 (11), B2 (12). Ends with a double bar line.

Long Tone 2

Musical notation for Long Tone 2, consisting of four staves of music. The notes are numbered 1 through 26. The first staff contains notes 1-7, the second 8-14, the third 15-21, and the fourth 22-26. The notes are connected by slurs, indicating a continuous line.

Long Tone 3

3a intervals of a minor 2nd

intervals of a major 2nd

Musical notation for Long Tone 3a, first staff. It shows intervals of a minor 2nd (notes 1-2, 3-4) and a major 2nd (notes 5-6, 7-8).

intervals of a minor 3rd

intervals of a major 3rd

Musical notation for Long Tone 3a, second staff. It shows intervals of a minor 3rd (notes 9-11, 12-14) and a major 3rd (notes 13-15, 16).

intervals of a perfect 4th

intervals of an augmented 4th

Musical notation for Long Tone 3a, third staff. It shows intervals of a perfect 4th (notes 17-20, 21-24) and an augmented 4th (notes 22-23).

intervals of a perfect 5th

Musical notation for Long Tone 3a, fourth staff. It shows intervals of a perfect 5th (notes 25-27, 28).

3b intervals of a minor 2nd

intervals of a major 2nd

intervals of a minor 3rd

Musical notation for Long Tone 3b, first staff. It shows intervals of a minor 2nd (notes 1-2, 3-4), a major 2nd (notes 5-6), and a minor 3rd (notes 7-8).

intervals of a major 3rd

intervals of a perfect 4th

intervals of an augmented 4th

Musical notation for Long Tone 3b, second staff. It shows intervals of a major 3rd (notes 9-11), a perfect 4th (notes 12-14), and an augmented 4th (notes 15-16).

Warm-Up Set 1

Options 1, 2, & 3

Three staves of musical notation for Options 1, 2, and 3. Each staff contains a sequence of notes with fingerings 1 through 5. The notes are grouped into three measures by curved lines. The first measure of each staff contains notes 1-2, the second measure contains notes 3-4, and the third measure contains notes 5-6. The notes are primarily quarter notes and half notes, with some accidentals (sharps and flats) appearing in the later measures.

Option 4

Three staves of musical notation for Option 4. Each staff contains a sequence of notes with fingerings 1 through 5. The notes are grouped into three measures by curved lines. The first measure of each staff contains notes 1-2, the second measure contains notes 3-4, and the third measure contains notes 5-6. The notes are primarily quarter notes and half notes, with some accidentals (sharps and flats) appearing in the later measures.

Option 5

Three staves of musical notation for Option 5. Each staff contains a sequence of notes with fingerings 1 through 5. The notes are grouped into three measures by curved lines. The first measure of each staff contains notes 1-2, the second measure contains notes 3-4, and the third measure contains notes 5-6. The notes are primarily quarter notes and half notes, with some accidentals (sharps and flats) appearing in the later measures.

Warm-Up Set 2

Options 1, 2, & 3

Three staves of musical notation for Options 1, 2, and 3. Each staff contains a sequence of 14 notes, numbered 1 through 14. The notes are connected by slurs, indicating a continuous melodic line. The first staff (Option 1) is in C major, the second (Option 2) is in B-flat major, and the third (Option 3) is in C major. The notes are: 1. C4, 2. D4, 3. E4, 4. F4, 5. G4, 6. A4, 7. B4, 8. C5, 9. B4, 10. A4, 11. G4, 12. F4, 13. E4, 14. D4.

Option 4

Three staves of musical notation for Option 4. Each staff contains a sequence of 14 notes, numbered 1 through 14. The notes are connected by slurs. The first staff (Option 4) is in C major, the second (Option 5) is in B-flat major, and the third (Option 6) is in C major. The notes are: 1. C4, 2. D4, 3. E4, 4. F4, 5. G4, 6. A4, 7. B4, 8. C5, 9. B4, 10. A4, 11. G4, 12. F4, 13. E4, 14. D4.

Option 5

Three staves of musical notation for Option 5. Each staff contains a sequence of 14 notes, numbered 1 through 14. The notes are connected by slurs. The first staff (Option 7) is in C major, the second (Option 8) is in B-flat major, and the third (Option 9) is in C major. The notes are: 1. C4, 2. D4, 3. E4, 4. F4, 5. G4, 6. A4, 7. B4, 8. C5, 9. B4, 10. A4, 11. G4, 12. F4, 13. E4, 14. D4.

Warm-Up Set 3

Options 1, 2, & 3

Musical notation for Options 1, 2, & 3, consisting of three staves. The first staff (measures 1-5) is in treble clef with a common time signature. The second staff (measures 6-10) is in treble clef with a key signature of one flat. The third staff (measures 11-14) is in treble clef with a key signature of one flat. The notation includes various note values, rests, and slurs.

Option 4

Musical notation for Option 4, consisting of three staves. The first staff (measures 1-5) is in treble clef with a common time signature. The second staff (measures 6-10) is in treble clef with a key signature of one flat. The third staff (measures 11-14) is in treble clef with a key signature of one flat. The notation includes various note values, rests, and slurs.

Option 5

Musical notation for Option 5, consisting of three staves. The first staff (measures 1-5) is in treble clef with a common time signature. The second staff (measures 6-10) is in treble clef with a key signature of one flat. The third staff (measures 11-14) is in treble clef with a key signature of one flat. The notation includes various note values, rests, and slurs.

Warm-Up Set 4

Options 1, 2, & 3 - fingerings indicated in parenthesis

Musical notation for Options 1, 2, & 3. It consists of three staves of music in treble clef with a common time signature. The first staff contains measures 1-5 with fingerings (1-2-3), (1-3), and (2-3). The second staff contains measures 6-10 with fingerings (1-2) and (1). The third staff contains measures 11-14 with fingerings (2) and (Open).

Option 4 - fingerings indicated in parenthesis

Musical notation for Option 4. It consists of three staves of music in treble clef with a common time signature. The first staff contains measures 1-5 with fingerings (1-2-3), (1-3), and (2-3). The second staff contains measures 6-10 with fingerings (1-2) and (1). The third staff contains measures 11-14 with fingerings (2) and (Open).

Option 5 - fingerings indicated in parenthesis

Musical notation for Option 5. It consists of four staves of music in treble clef with a common time signature. The first staff contains measures 1-4 with fingerings (1-2-3) and (1-3). The second staff contains measures 5-8 with fingerings (2-3) and (1-2). The third staff contains measures 9-12 with fingerings (1) and (2). The fourth staff contains measures 13-14 with the fingering (Open).

Technical Exercises in the Key of C (Concert B \flat)

Major Scale

Natural Minor

Harmonic Minor

Melodic Minor

Mini-Scale & Tonic Arpeggio

Scale Pattern 1 *articulations: ¹ ² ³ ⁴ ⁵ ⁶ ⁷ ⁸

Scale Pattern 2*

Musical notation for Scale Pattern 2* in C major, 4/4 time. The piece consists of two staves. The upper staff features a melodic line with eighth-note patterns, and the lower staff provides a bass line with eighth-note accompaniment.

Scale in Thirds*

Musical notation for Scale in Thirds* in C major, 4/4 time. The upper staff shows a scale of thirds, and the lower staff shows a scale of sixths.

Interval Study

Musical notation for Interval Study in C major, 4/4 time. The single staff contains a sequence of intervals: major second, minor second, major third, minor third, major fourth, minor fourth, major fifth, and minor fifth.

Triads of the C Scale

Musical notation for Triads of the C Scale in C major, 4/4 time. The single staff shows the seven triads of the scale: I (C major), ii (D minor), iii (E minor), IV (F major), V (G major), vi (A minor), and vii° (B diminished).

Chord Study 1*

Musical notation for Chord Study 1* in C major, 4/4 time. The piece consists of two staves. The upper staff shows six chords (I, ii, iii, IV, V, vi) with a melodic line, and the lower staff shows a bass line.

Chord Study 2 - articulations:

Musical notation for Chord Study 2 - articulations in C major, 4/4 time. The piece consists of two staves. The upper staff features a melodic line with triplets and slurs, and the lower staff features a bass line with slurs.

Technical Exercises in the Key of G (Concert F)

Major Scale

Natural Minor

Harmonic Minor

Melodic Minor

Mini-Scale & Tonic Arpeggio

Scale Pattern 1 *articulations:

Scale Pattern 2*

Scale in Thirds*

Interval Study

Triads of the G Scale

Chord Study 1*

Chord Study 2 - articulations:

Technical Exercises in the Key of D (Concert C)

Major Scale

Natural Minor

Harmonic Minor

Melodic Minor

Mini-Scale & Tonic Arpeggio

Scale Pattern 1 *articulations: $\overset{1}{\text{D}}$ $\overset{2}{\text{E}}$ $\overset{3}{\text{F}}$ $\overset{4}{\text{G}}$ $\overset{5}{\text{A}}$ $\overset{6}{\text{B}}$ $\overset{7}{\text{C}}$ $\overset{8}{\text{D}}$

Scale Pattern 2*

Two staves of music in D major, 4/4 time. The top staff features a melodic line with eighth-note patterns, and the bottom staff features a bass line with eighth-note patterns.

Scale in Thirds*

Two staves of music in D major, 4/4 time. The top staff features a melodic line with eighth-note patterns, and the bottom staff features a bass line with eighth-note patterns.

Interval Study

One staff of music in D major, 4/4 time, featuring a melodic line with eighth-note patterns.

Triads of the D Scale

One staff of music in D major, 4/4 time, showing seven triads labeled i through vii^o.

Chord Study 1*

Two staves of music in D major, 4/4 time. The top staff features a melodic line with eighth-note patterns, and the bottom staff features a bass line with eighth-note patterns.

Chord Study 2 - articulations:

Two staves of music in D major, 4/4 time. The top staff features a melodic line with eighth-note patterns and articulation marks (1-6). The bottom staff features a bass line with eighth-note patterns and articulation marks (1-5).

Technical Exercises in the Key of A (Concert G)

Major Scale

Two staves of musical notation for a Major Scale exercise in A major. The top staff begins with a whole rest, while the bottom staff starts with a quarter note on A. Both staves play eighth-note ascending and descending scales. The exercise concludes with a whole note chord of A major (A-C#-E) on both staves.

Natural Minor

Two staves of musical notation for a Natural Minor scale exercise in A minor. The top staff begins with a whole rest, while the bottom staff starts with a quarter note on A. Both staves play eighth-note ascending and descending scales. The exercise concludes with a whole note chord of A minor (A-C-E) on both staves.

Harmonic Minor

Two staves of musical notation for a Harmonic Minor scale exercise in A minor. The top staff begins with a whole rest, while the bottom staff starts with a quarter note on A. Both staves play eighth-note ascending and descending scales, with a raised seventh degree (G#) in the descending line. The exercise concludes with a whole note chord of A minor (A-C-E) on both staves.

Melodic Minor

Two staves of musical notation for a Melodic Minor scale exercise in A minor. The top staff begins with a whole rest, while the bottom staff starts with a quarter note on A. Both staves play eighth-note ascending and descending scales, with raised sixth and seventh degrees (F# and G#) in the ascending line. The exercise concludes with a whole note chord of A minor (A-C-E) on both staves.

Mini-Scale & Tonic Arpeggio

Two staves of musical notation for a Mini-Scale & Tonic Arpeggio exercise in A major. The top staff features a melodic line with slurs and accents, while the bottom staff plays a steady eighth-note accompaniment. The exercise concludes with a whole note chord of A major (A-C#-E) on both staves.

Scale Pattern 1 *articulations: 1 2 3 4 5 6 7 8

Two staves of musical notation for Scale Pattern 1 in A major. The top staff features a melodic line with slurs and accents, while the bottom staff plays a steady eighth-note accompaniment. The exercise concludes with a whole note chord of A major (A-C#-E) on both staves.

Scale Pattern 2*

Musical notation for Scale Pattern 2* in A major, 4/4 time. The piece consists of two staves. The upper staff features a melodic line with eighth-note patterns, and the lower staff provides a bass line with a steady eighth-note accompaniment.

Scale in Thirds*

Musical notation for Scale in Thirds* in A major, 4/4 time. The upper staff shows a scale of thirds, and the lower staff shows a scale of sixths, both in eighth notes.

Interval Study

Musical notation for Interval Study in A major, 4/4 time. The upper staff contains a sequence of intervals, and the lower staff provides a bass line.

Triads of the A Scale

Musical notation for Triads of the A Scale in A major, 4/4 time. The upper staff shows the seven triads of the scale: I, ii, iii, IV, V, vi, and vii°. The lower staff provides a bass line.

Chord Study 1*

Musical notation for Chord Study 1* in A major, 4/4 time. The upper staff shows six chords (1-6) with eighth-note patterns, and the lower staff provides a bass line.

Chord Study 2 - articulations:

Musical notation for Chord Study 2 - articulations in A major, 4/4 time. The upper staff shows eighth-note patterns with triplets and accents, and the lower staff provides a bass line.

Technical Exercises in the Key of E (Concert D)

Major Scale

Musical notation for four scales in the key of E (concert D):

- Major Scale:** Treble clef, E major key signature (three sharps). Ascending eighth-note scale, descending eighth-note scale, and a whole-note chord at the end.
- Natural Minor:** Treble clef, E major key signature. Ascending eighth-note scale, descending eighth-note scale, and a whole-note chord at the end.
- Harmonic Minor:** Treble clef, E major key signature. Ascending eighth-note scale with a raised seventh degree (F#), descending eighth-note scale with a raised seventh degree (F#), and a whole-note chord at the end.
- Melodic Minor:** Treble clef, E major key signature. Ascending eighth-note scale with raised sixth and seventh degrees (F# and G#), descending eighth-note scale with a raised seventh degree (F#), and a whole-note chord at the end.

Mini-Scale & Tonic Arpeggio

Musical notation for a Mini-Scale & Tonic Arpeggio exercise in the key of E (concert D). The exercise consists of two staves. The top staff features a melodic line with eighth-note runs and slurs. The bottom staff features a corresponding arpeggiated accompaniment.

Scale in Thirds - articulations: 1 2 3 4 5 6 7 8

Musical notation for a Scale in Thirds exercise in the key of E (concert D). The exercise consists of two staves. The top staff features a melodic line with eighth-note runs and slurs. The bottom staff features a corresponding arpeggiated accompaniment.

Trumpets only-extended major scale

Musical notation for a Trumpets only-extended major scale exercise in the key of E (concert D). The exercise consists of two staves. The top staff features a melodic line with eighth-note runs and slurs. The bottom staff features a corresponding arpeggiated accompaniment.

Technical Exercises in the Key of B (Concert A)

Major Scale

Natural Minor

Harmonic Minor

Melodic Minor

Mini-Scale & Tonic Arpeggio

Scale in Thirds - articulations: 1 2 3 4 5 6 7 8

Technical Exercises in the Key of F# (Concert E)

Major Scale

Natural Minor

Harmonic Minor

Melodic Minor

Mini-Scale & Tonic Arpeggio

Scale in Thirds - articulations: ¹ ² ³ ⁴ ⁵ ⁶ ⁷ ⁸

Technical Exercises in the Key of D \flat (Concert B)

Major Scale

Two staves of musical notation for the Major Scale in D \flat major. The key signature has two flats (B \flat and E \flat). The time signature is common time (C). The first staff contains the treble clef and the second the bass clef. The music consists of eighth-note runs in both directions, with a final whole-note chord.

Natural Minor

Two staves of musical notation for the Natural Minor scale in D \flat major. The key signature has two flats (B \flat and E \flat). The time signature is common time (C). The first staff contains the treble clef and the second the bass clef. The music consists of eighth-note runs in both directions, with a final whole-note chord.

Harmonic Minor

Two staves of musical notation for the Harmonic Minor scale in D \flat major. The key signature has two flats (B \flat and E \flat). The time signature is common time (C). The first staff contains the treble clef and the second the bass clef. The music consists of eighth-note runs in both directions, with a final whole-note chord. The natural minor scale is altered with a sharp on the seventh degree.

Melodic Minor

Two staves of musical notation for the Melodic Minor scale in D \flat major. The key signature has two flats (B \flat and E \flat). The time signature is common time (C). The first staff contains the treble clef and the second the bass clef. The music consists of eighth-note runs in both directions, with a final whole-note chord. The natural minor scale is altered with sharps on the sixth and seventh degrees.

Mini-Scale & Tonic Arpeggio

Two staves of musical notation for the Mini-Scale & Tonic Arpeggio in D \flat major. The key signature has two flats (B \flat and E \flat). The time signature is common time (C). The first staff contains the treble clef and the second the bass clef. The music consists of eighth-note runs in both directions, with a final whole-note chord.

Scale in Thirds - articulations: 

Two staves of musical notation for the Scale in Thirds in D \flat major. The key signature has two flats (B \flat and E \flat). The time signature is common time (C). The first staff contains the treble clef and the second the bass clef. The music consists of eighth-note runs in both directions, with a final whole-note chord.

Technical Exercises in the Key of A \flat (Concert G \flat)

Major Scale

Natural Minor

Harmonic Minor

Melodic Minor

Mini-Scale & Tonic Arpeggio

Scale Pattern 1 *articulations: $\overset{1}{\text{trill}}$ $\overset{2}{\text{trill}}$ $\overset{3}{\text{trill}}$ $\overset{4}{\text{trill}}$ $\overset{5}{\text{trill}}$ $\overset{6}{\text{trill}}$ $\overset{7}{\text{trill}}$ $\overset{8}{\text{trill}}$

Scale Pattern 2*

Scale in Thirds*

Interval Study

Triads of the A \flat Scale

Chord Study 1*

Chord Study 2 - articulations:

Technical Exercises in the Key of E \flat (Concert D \flat)

Major Scale

Four staves of musical notation in the key of E \flat (Concert D \flat), each starting with a common time signature (C). The first staff is labeled "Major Scale" and shows the ascending and descending major scale. The second staff is labeled "Natural Minor" and shows the ascending and descending natural minor scale. The third staff is labeled "Harmonic Minor" and shows the ascending and descending harmonic minor scale. The fourth staff is labeled "Melodic Minor" and shows the ascending and descending melodic minor scale. Each staff concludes with a whole note chord.

Mini-Scale & Tonic Arpeggio

Two staves of musical notation in the key of E \flat (Concert D \flat), each starting with a common time signature (C). The top staff shows a mini-scale with eighth notes, and the bottom staff shows a tonic arpeggio with eighth notes. Both staves conclude with a whole note chord.

Scale Pattern 1 * articulations: $\overset{1}{\text{trill}}$ $\overset{2}{\text{trill}}$ $\overset{3}{\text{trill}}$ $\overset{4}{\text{trill}}$ $\overset{5}{\text{trill}}$ $\overset{6}{\text{trill}}$ $\overset{7}{\text{trill}}$ $\overset{8}{\text{trill}}$

Two staves of musical notation in the key of E \flat (Concert D \flat), each starting with a common time signature (C). The top staff shows a scale pattern with eighth notes, and the bottom staff shows a scale pattern with eighth notes. Both staves conclude with a whole note chord.

Trumpets only-extended scale

Two staves of musical notation in the key of E \flat (Concert D \flat), each starting with a common time signature (C). The top staff shows an extended scale with eighth notes, and the bottom staff shows an extended scale with eighth notes. Both staves conclude with a whole note chord.

Scale Pattern 2*

Scale in Thirds*

Interval Study

Triads of the E \flat Scale

Chord Study 1*

Chord Study 2 - articulations:

Technical Exercises in the Key of B \flat (Concert A \flat)

Major Scale

Natural Minor

Harmonic Minor

Melodic Minor

Mini-Scale & Tonic Arpeggio

Scale Pattern 1 *articulations: 1 2 3 4 5 6 7 8

Scale Pattern 2*

Scale in Thirds*

Interval Study

Triads of the B \flat Scale

Chord Study 1*

Chord Study 2 - articulations:

Technical Exercises in the Key of F (Concert E \flat)

Major Scale

Four staves of musical notation showing the scales in the key of F (Concert E \flat):

- Major Scale:** Treble clef, key signature of two flats (F and C \flat), common time signature. The scale is written in a single line.
- Natural Minor:** Treble clef, key signature of three flats (F, C \flat , and G \flat), common time signature. The scale is written in a single line.
- Harmonic Minor:** Treble clef, key signature of three flats (F, C \flat , and G \flat), common time signature. The scale is written in a single line.
- Melodic Minor:** Treble clef, key signature of three flats (F, C \flat , and G \flat), common time signature. The scale is written in a single line.

Mini-Scale & Tonic Arpeggio

Two staves of musical notation for the Mini-Scale & Tonic Arpeggio exercise in the key of F (Concert E \flat):

- The top staff shows a mini-scale with eighth notes, starting on F \flat and ending on F \flat .
- The bottom staff shows the tonic arpeggio, starting on F \flat and ending on F \flat .

Scale Pattern 1 *articulations:

Two staves of musical notation for Scale Pattern 1 with articulations in the key of F (Concert E \flat):

- The top staff shows the scale with articulations (accents) on the first, second, third, fourth, fifth, sixth, seventh, and eighth notes.
- The bottom staff shows the scale with articulations (accents) on the first, second, third, fourth, fifth, sixth, seventh, and eighth notes.

Trumpets only-extended scale

Two staves of musical notation for the Trumpets only-extended scale in the key of F (Concert E \flat):

- The top staff shows the extended scale, starting on F \flat and ending on F \flat .
- The bottom staff shows the extended scale, starting on F \flat and ending on F \flat .

Scale Pattern 2*

Musical notation for Scale Pattern 2* in F major, 4/4 time. The piece consists of two staves. The upper staff features a melodic line with eighth-note patterns, and the lower staff provides a bass line with eighth-note accompaniment.

Scale in Thirds*

Musical notation for Scale in Thirds* in F major, 4/4 time. The piece consists of two staves. The upper staff plays a scale in thirds, and the lower staff plays a scale in sixths.

Interval Study

Musical notation for Interval Study in F major, 4/4 time. The piece consists of a single staff with a sequence of intervals: major second, minor second, major third, minor third, major fourth, minor fourth, major fifth, and minor fifth.

Triads of the F Scale

Musical notation for Triads of the F Scale in F major, 4/4 time. The piece consists of a single staff showing seven triads labeled I, ii, iii, IV, V, vi, and vii^o.

Chord Study 1*

Musical notation for Chord Study 1* in F major, 4/4 time. The piece consists of two staves. The upper staff shows six chords (I, ii, iii, IV, V, vi) with a melodic line, and the lower staff shows the corresponding bass line.

Chord Study 2 - articulations:

Musical notation for Chord Study 2 - articulations in F major, 4/4 time. The piece consists of two staves. The upper staff features sixteenth-note patterns with articulation marks (1-6) and triplets (3). The lower staff provides a bass line with articulation marks (1-5).

Chorales & Tuning Exercises in C (Concert B \flat)

Interval Tuning

1 Intervals from tonic (major 3rd, perfect 4th, perfect 5th)

2 Intervals of a major 3rd on the I-IV-V-I chord progression

3 Intervals of a perfect 5th on the I-IV-V-I chord progression

Chord Tuning

Chorale 1 (full band)

Chorale 2 (full band)

Tpt 1/2

mf

divisi

ritard

Chorale Melody on Chester

Subdivision

Chorale Melody

Bopped

mf

(cadence)

Chester (full band)

Tpt 1/2

mf

mp

mf

f

Chorales & Tuning Exercises in G (Concert F)

Interval Tuning

1 Intervals from tonic (major 3rd, perfect 4th, perfect 5th)

2 Intervals of a major 3rd on the I-IV-V-I chord progression

3 Intervals of a perfect 5th on the I-IV-V-I chord progression

Chord Tuning

Chorale 3 (full band)

Chorale 4 (full band)

Musical score for Tpt 1/2, Chorale 4 (full band). The score is in G major and 4/4 time. It consists of two staves of music. The first staff starts with a *mf* dynamic marking. The second staff includes a *divisi* marking above measure 6 and an *a2* marking above measure 7. Measures are numbered 1 through 8.

Chorale Melody on Bach 95

Musical score for Chorale Melody on Bach 95. The score is in G major and 4/4 time. It consists of three staves: Subdivision, Chorale Melody, and Bopped. The Chorale Melody staff starts with a *mf* dynamic marking. The Subdivision staff has a *(cadence)* marking above measure 4. The Bopped staff has a *(cadence)* marking above measure 8. Measures are numbered 1 through 8.

Bach 95 (full band)

Musical score for Tpt 1/2, Bach 95 (full band). The score is in G major and 4/4 time. It consists of three staves of music. The first staff starts with a *mf* dynamic marking. Measures are numbered 1 through 12.

Chorales & Tuning Exercises in F (Concert Eb)

Interval Tuning

1 Intervals from tonic (major 3rd, perfect 4th, perfect 5th)

2 Intervals of a major 3rd on the I-IV-V-I chord progression

3 Intervals of a perfect 5th on the I-IV-V-I chord progression

Chord Tuning

Chorale 5 (full band)

Chorale 6 (full band)

Tpt 1/2 *mf*

1 *divisi* 2 3 4

5 6 7 8

Chorale Melody on America

Subdivision

Chorale Melody *mf*

Bopped

1 2 3

4 5 6 (cadence)

America (full band)

Tpt 1/2 *mf*

1 2 3 4 5

6 7 8 9 10

11 12 13 14

Chorale & Tuning Exercises in D (Concert C)

Interval Tuning

1 Intervals from tonic (major 3rd, perfect 4th, perfect 5th)

Chord Tuning

Air (full band)

Chorale & Tuning Exercises in d minor (Concert c minor)

Interval Tuning

1 Intervals from tonic (minor 3rd, perfect 4th, perfect 5th)

Chord Tuning

Greensleeves (full band)

Chorale & Tuning Exercises in A (Concert G)

Interval Tuning

1 Intervals from tonic (major 3rd, perfect 4th, perfect 5th)

Chord Tuning

Pavane (full band)

Chorale & Tuning Exercises in a minor (Concert g minor)

Interval Tuning

1 Intervals from tonic (minor 3rd, perfect 4th, perfect 5th)

Chord Tuning

The Queene's Alman (full band)

Chorale & Tuning Exercises in B \flat (Concert A \flat)

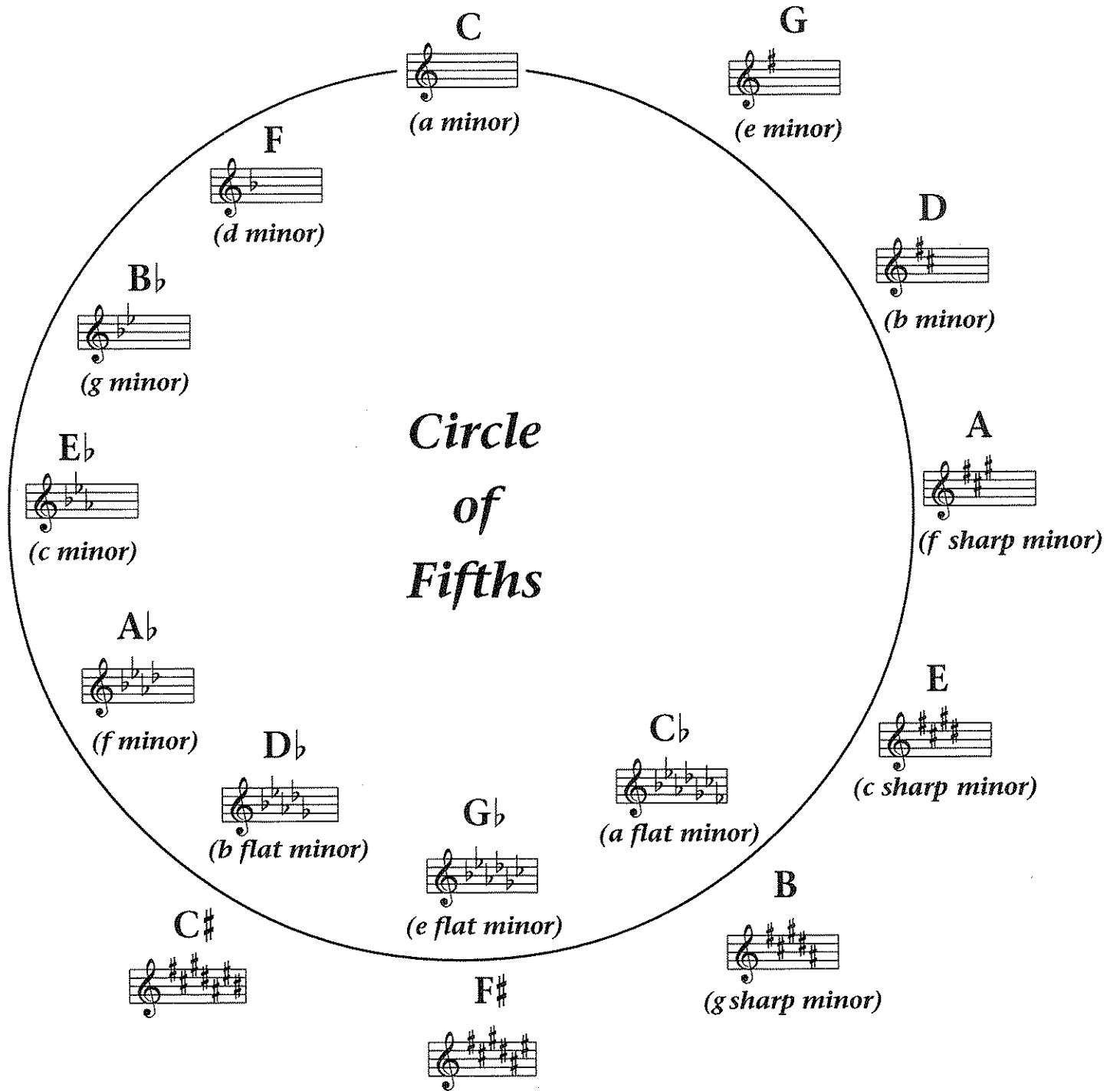
Interval Tuning

1 Intervals from tonic (major 3rd, perfect 4th, perfect 5th)

Chord Tuning

All Through the Night (full band)

Appendix



One Octave Scales & Arpeggios

In All Twelve Major Key Signatures

B \flat /C 

F/G 

C/D 

G/A 

D/E 

A/B 

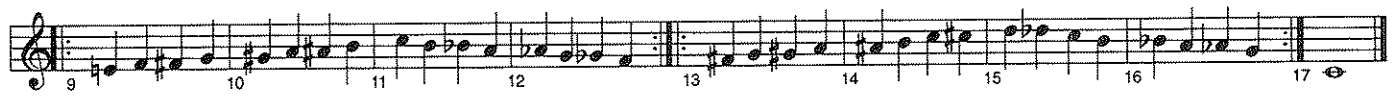
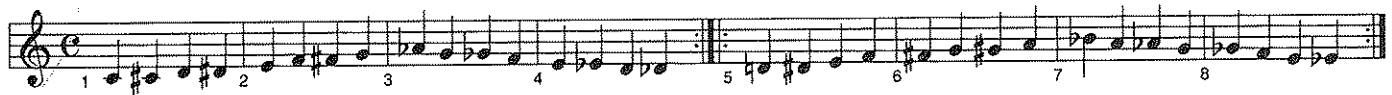
E/F# 

E/G \flat 

B/D \flat 



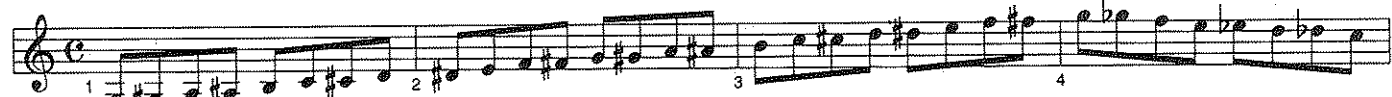
Chromatic Exercises



C Chromatic Scale (Concert Bb)



G Chromatic Scale (Concert F)



Full Range Scales

In All Twelve Major Key Signatures

B \flat /C  Musical notation for the B-flat/C scale in treble clef, common time. The scale starts on B-flat and ends on C.

F/G  Musical notation for the F/G scale in treble clef, common time. The scale starts on F and ends on G.

C/D  Musical notation for the C/D scale in treble clef, common time. The scale starts on C and ends on D.

G/A  Musical notation for the G/A scale in treble clef, common time. The scale starts on G and ends on A.

D/E  Musical notation for the D/E scale in treble clef, common time. The scale starts on D and ends on E.

A/B  Musical notation for the A/B scale in treble clef, common time. The scale starts on A and ends on B.

E/F \sharp  Musical notation for the E/F-sharp scale in treble clef, common time. The scale starts on E and ends on F-sharp.

E/G \flat  Musical notation for the E/G-flat scale in treble clef, common time. The scale starts on E and ends on G-flat.

B/D \flat  Musical staff in treble clef with a key signature of three flats (B \flat , E \flat , A \flat) and a common time signature. The melody consists of eighth and quarter notes, starting on a whole note G \flat and ending on a whole note G \flat .

G \flat /A \flat  Musical staff in treble clef with a key signature of three flats (B \flat , E \flat , A \flat) and a common time signature. The melody consists of eighth and quarter notes, starting on a whole note G \flat and ending on a whole note G \flat .

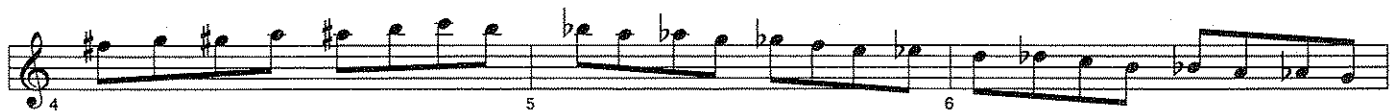
D \flat /E \flat  Musical staff in treble clef with a key signature of three flats (B \flat , E \flat , A \flat) and a common time signature. The melody consists of eighth and quarter notes, starting on a whole note D \flat and ending on a whole note D \flat .

A \flat /B \flat  Musical staff in treble clef with a key signature of three flats (B \flat , E \flat , A \flat) and a common time signature. The melody consists of eighth and quarter notes, starting on a whole note A \flat and ending on a whole note A \flat .

E \flat /F  Musical staff in treble clef with a key signature of three flats (B \flat , E \flat , A \flat) and a common time signature. The melody consists of eighth and quarter notes, starting on a whole note E \flat and ending on a whole note E \flat .

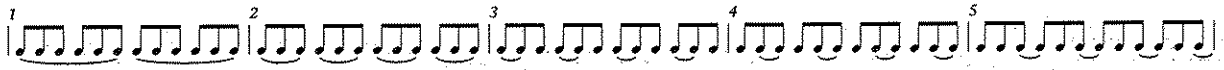
Full Range Chromatic - For Trumpets Only

 Musical staff in treble clef with a common time signature. The melody is a chromatic scale starting on a whole note C \sharp (labeled 1), moving up through D \sharp , E \sharp , F \sharp , G \sharp , A \sharp , B \sharp , and ending on a whole note C \sharp (labeled 2).

 Musical staff in treble clef with a common time signature. The melody is a chromatic scale starting on a whole note B \sharp (labeled 3), moving up through C \sharp , D \sharp , E \sharp , F \sharp , G \sharp , A \sharp , and ending on a whole note B \sharp (labeled 4).

 Musical staff in treble clef with a common time signature. The melody is a chromatic scale starting on a whole note A \sharp (labeled 5), moving up through B \sharp , C \sharp , D \sharp , E \sharp , F \sharp , G \sharp , and ending on a whole note A \sharp (labeled 6).

Chromatic Scales



E/F#

Two staves of music for the E/F# chromatic scale. The top staff is in treble clef and the bottom staff is in bass clef. Both are in common time (C). The music consists of two measures of chromatic scales, each with a triplet of eighth notes. The first measure is ascending and the second is descending. The notes are: E4, F#4, G4, A4, B4, C5, B4, A4, G4, F#4, E4.

F/G

Two staves of music for the F/G chromatic scale. The top staff is in treble clef and the bottom staff is in bass clef. Both are in common time (C). The music consists of two measures of chromatic scales, each with a triplet of eighth notes. The first measure is ascending and the second is descending. The notes are: F4, G4, A4, B4, C5, B4, A4, G4, F4.

Gb/Ab

Two staves of music for the Gb/Ab chromatic scale. The top staff is in treble clef and the bottom staff is in bass clef. Both are in common time (C). The music consists of two measures of chromatic scales, each with a triplet of eighth notes. The first measure is ascending and the second is descending. The notes are: Gb4, Ab4, Bb4, C5, Bb4, Ab4, Gb4.

G/A

Two staves of music for the G/A chromatic scale. The top staff is in treble clef and the bottom staff is in bass clef. Both are in common time (C). The music consists of two measures of chromatic scales, each with a triplet of eighth notes. The first measure is ascending and the second is descending. The notes are: G4, A4, B4, C5, B4, A4, G4.

Ab/Bb

Two staves of music for the Ab/Bb chromatic scale. The top staff is in treble clef and the bottom staff is in bass clef. Both are in common time (C). The music consists of two measures of chromatic scales, each with a triplet of eighth notes. The first measure is ascending and the second is descending. The notes are: Ab4, Bb4, C5, Bb4, Ab4.

A/B

Two staves of music for the A/B chromatic scale. The top staff is in treble clef and the bottom staff is in bass clef. Both are in common time (C). The music consists of two measures of chromatic scales, each with a triplet of eighth notes. The first measure is ascending and the second is descending. The notes are: A4, B4, C5, B4, A4.

B \flat /C

Two staves of musical notation in C major. The top staff contains a sequence of eighth-note triplets: C4-D4-E4, D4-E4-F4, E4-F4-G4, F4-G4-A4, G4-A4-B4, A4-B4-C5, B4-A4-G4, A4-B4-C5, G4-A4-B4, A4-B4-C5, B4-A4-G4, A4-B4-C5, G4-A4-B4, A4-B4-C5. The bottom staff contains a sequence of eighth-note triplets: C4-B3-A3, B3-A3-G3, A3-G3-F3, G3-F3-E3, F3-E3-D3, E3-D3-C3, B3-A3-G3, A3-G3-F3, G3-F3-E3, F3-E3-D3, E3-D3-C3, B3-A3-G3, A3-G3-F3, G3-F3-E3, F3-E3-D3, E3-D3-C3.

B/D \flat

Two staves of musical notation in B-flat major. The top staff contains a sequence of eighth-note triplets: B3-C4-D4, C4-D4-E4, D4-E4-F4, E4-F4-G4, F4-G4-A4, G4-A4-B4, C4-B3-A3, B3-A3-G3, A3-G3-F3, G3-F3-E3, F3-E3-D3, E3-D3-C3, B3-A3-G3, A3-G3-F3, G3-F3-E3, F3-E3-D3, E3-D3-C3. The bottom staff contains a sequence of eighth-note triplets: B3-A3-G3, A3-G3-F3, G3-F3-E3, F3-E3-D3, E3-D3-C3, B3-A3-G3, A3-G3-F3, G3-F3-E3, F3-E3-D3, E3-D3-C3, B3-A3-G3, A3-G3-F3, G3-F3-E3, F3-E3-D3, E3-D3-C3, B3-A3-G3, A3-G3-F3, G3-F3-E3, F3-E3-D3, E3-D3-C3.

C/D

Two staves of musical notation in C major. The top staff contains a sequence of eighth-note triplets: C4-D4-E4, D4-E4-F4, E4-F4-G4, F4-G4-A4, G4-A4-B4, A4-B4-C5, B4-A4-G4, A4-B4-C5, G4-A4-B4, A4-B4-C5, B4-A4-G4, A4-B4-C5, G4-A4-B4, A4-B4-C5. The bottom staff contains a sequence of eighth-note triplets: C4-B3-A3, B3-A3-G3, A3-G3-F3, G3-F3-E3, F3-E3-D3, E3-D3-C3, B3-A3-G3, A3-G3-F3, G3-F3-E3, F3-E3-D3, E3-D3-C3, B3-A3-G3, A3-G3-F3, G3-F3-E3, F3-E3-D3, E3-D3-C3.

D \flat /E \flat

Single staff of musical notation in B-flat major. It contains a sequence of eighth-note triplets: B3-C4-D4, C4-D4-E4, D4-E4-F4, E4-F4-G4, F4-G4-A4, G4-A4-B4, C4-B3-A3, B3-A3-G3, A3-G3-F3, G3-F3-E3, F3-E3-D3, E3-D3-C3, B3-A3-G3, A3-G3-F3, G3-F3-E3, F3-E3-D3, E3-D3-C3.

D/E

Single staff of musical notation in D major. It contains a sequence of eighth-note triplets: D4-E4-F4, E4-F4-G4, F4-G4-A4, G4-A4-B4, A4-B4-C5, B4-A4-G4, A4-B4-C5, G4-A4-B4, A4-B4-C5, B4-A4-G4, A4-B4-C5, G4-A4-B4, A4-B4-C5.

E \flat /F

Single staff of musical notation in F major. It contains a sequence of eighth-note triplets: F4-G4-A4, G4-A4-B4, A4-B4-C5, B4-A4-G4, A4-B4-C5, G4-A4-B4, A4-B4-C5, F4-G4-A4, G4-A4-B4, A4-B4-C5, B4-A4-G4, A4-B4-C5, G4-A4-B4, A4-B4-C5.

For Trumpets Only

Single staff of musical notation in C major. It contains a sequence of eighth-note triplets: C4-D4-E4, D4-E4-F4, E4-F4-G4, F4-G4-A4, G4-A4-B4, A4-B4-C5, B4-A4-G4, A4-B4-C5, G4-A4-B4, A4-B4-C5, B4-A4-G4, A4-B4-C5, G4-A4-B4, A4-B4-C5.

Single staff of musical notation in C major. It contains a sequence of eighth-note triplets: C4-B3-A3, B3-A3-G3, A3-G3-F3, G3-F3-E3, F3-E3-D3, E3-D3-C3, B3-A3-G3, A3-G3-F3, G3-F3-E3, F3-E3-D3, E3-D3-C3, B3-A3-G3, A3-G3-F3, G3-F3-E3, F3-E3-D3, E3-D3-C3.

Major Arpeggios & Inversions

This musical score displays twelve major arpeggios and their inversions, each on a separate staff. The chords are: Bb/C, F/G, C/D, G/A, D/E, A/B, E/F#, E/Gb, B/Db, Gb/Ab, Db/Eb, and Eb/F. Each staff begins with a treble clef and a common time signature (C). The arpeggios are written in a consistent ascending and descending pattern across the staff. The key signature for each staff is indicated by the number of sharps or flats at the beginning of the staff.