

A CHILDHOOD HYMN

FLUTE

David R. Holsinger
(ASCAP)

Concert B \flat Scale and Arpeggio

Key of B \flat

Concert E \flat Scale and Arpeggio

Key of E \flat

Slow and expressive, legato in style

8

9 Faster, with movement

13

Soli

mp

17

(mp)

Don't Rush!!

22

f

26

4

allargando

mf

31 Slightly broader

f

37 Slower, gently

p

Soli

(p)

rall.

Any reproduction, adaptation or arrangement of this work in whole or in part without the consent of the copyright owner constitutes an infringement of copyright.

© Copyright 1991 by Wingert-Jones Music, Inc. Kansas City, MO 64137

International Copyright Secured Made in U.S.A. All Rights Reserved.

A CHILDHOOD HYMN

1st CLARINET

David R. Holsinger
(ASCAP)

Concert B \flat Scale and Arpeggio *Key of C*

Concert E \flat Scale and Arpeggio *Key of F*

Slow and expressive, legato in style

p *ten.* *ten.*

9 **Faster, with movement**

13

17

mp

22 *Don't Rush*

26 *f*

31 **Slightly broader** *allargando* *f*

37 **Slower, gently** *p*

rall.

Any reproduction, adaptation or arrangement of this work in whole or in part without the consent of the copyright owner constitutes an infringement of copyright.

© Copyright 1991 by Wingert-Jones Music, Inc. Kansas City, MO 64137

International Copyright Secured Made in U.S.A. All Rights Reserved.

120

A CHILDHOOD HYMN

2nd CLARINET

David R. Holsinger
(ASCAP)

Key of C

Concert Eb Scale and Arpeggio

Key of F

Concert Eb Scale and Arpeggio

Slow and expressive, legato in style

A CHILDHOOD HYMN

1st ALTO SAXOPHONE

David R. Holsinger
(ASCAP)

Concert Bb Scale and Arpeggio

Key of G

Concert Eb Scale and Arpeggio

Key of C

Slow and expressive, legato in style

9 Faster, with movement

13

17

Don't rush

22

23 see measure 21

26

27

allargando

31 Slightly broader

37 Slower, gently

rall.

Any reproduction, adaptation or arrangement of this work in whole or in part without the consent of the copyright owner constitutes an infringement of copyright.

© Copyright 1991 by Wingert-Jones Music, Inc. Kansas City, MO 64137

International Copyright Secured Made in U.S.A. All Rights Reserved.

A CHILDHOOD HYMN

id ALTO SAXOPHONE

David R. Holsinger
(ASCAP)

Concert Bb Scale and Arpeggio

Key of G

Concert Eb Scale and Arpeggio

Key of C

Slow and expressive, legato in style

ten.

p

9 Faster, with movement

(p)

13

17 *Don't rush*

mp

22 *Don't rush*

f

26 *(f)*

31 Slightly broader

mf *f*

37 Slower, gently

p *rall.*

Any reproduction, adaptation or arrangement of this work in whole or in part without the consent of the copyright owner constitutes an infringement of copyright.

© Copyright 1991 by Wingert-Jones Music, Inc. Kansas City, MO 64137

International Copyright Secured Made in U.S.A. All Rights Reserved

A CHILDHOOD HYMN

TENOR SAXOPHONE

David R. Holsinger
(ASCAP)

Concert B \flat Scale and Arpeggio

Key of C

Concert E \flat Scale and Arpeggio

Key of F

Slow and expressive, legato in style

p *ten.* *ten.*

9 Faster, with movement *(p)*

13

17 *mp*

22 *f* **26** *(f)*

allargando **31** Slightly broader *f*

37 Slower, gently *p* *rall.*

Any reproduction, adaptation or arrangement of this work in whole or in part without the consent of the copyright owner constitutes an infringement of copyright.

© Copyright 1991 by Wingert-Jones Music, Inc. Kansas City, MO 64137

International Copyright Secured Made in U.S.A. All Rights Reserved.

A CHILDHOOD HYMN

BARITONE SAXOPHONE
ALTO CLARINET

David R. Holsinger
(ASCAP)

Concert Eb Scale and Arpeggio

Key of G

Concert Eb Scale and Arpeggio

Key of C

Slow and expressive, legato in style

p *ten.* *ten.*

9 Faster, with movement

(p)

13

17

22

26

f *mf* *f*

31 Slightly broader

allargando *mf* *f*

37 Slower, gently

p

rall.

Any reproduction, adaptation or arrangement of this work in whole or in part without the consent of the copyright owner constitutes an infringement of copyright.

© Copyright 1991 by Wingert-Jones Music, Inc. Kansas City, MO 64137

International Copyright Secured Made in U.S.A. All Rights Reserved.

A CHILDHOOD HYMN

David R. Holsinger
(ASCAP)

1st TRUMPET/CORNET

Concert Eb Scale and Arpeggio

Key of C

Concert Eb Scale and Arpeggio

Key of F

Slow and expressive,
legato in style

9 Faster, with movement 13

8 4 4 17

mp

22

f

26 4 31 Slightly broader

allargando *f*

37 Slower, gently

3 *p* *rall.*

Any reproduction, adaptation or arrangement of this work in whole or in part without the consent of the copyright owner constitutes an infringement of copyright.

© Copyright 1991 by Wingert-Jones Music, Inc. Kansas City, MO 64137

International Copyright Secured Made in U.S.A. All Rights Reserved.

A CHILDHOOD HYMN

2nd TRUMPET/CORNET

David R. Holsinger
(ASCAP)

Concert B \flat Scale and Arpeggio

Key of C

Concert E \flat Scale and Arpeggio

Key of F

Slow and expressive, legato in style

8

9 Faster, with movement

4

13

4

17

3

22

f

26

4

31 Slightly broader

allargando

f

37 Slower, gently

5

p rall.

Any reproduction, adaptation or arrangement of this work in whole or in part without the consent of the copyright owner constitutes an infringement of copyright.

© Copyright 1991 by Wingert-Jones Music, Inc. Kansas City, MO 64137

International Copyright Secured Made in U.S.A. All Rights Reserved.

A CHILDHOOD HYMN

David R. Holsinger
(ASCAP)

F HORN

Concert B \flat Scale and Arpeggio *Key of F*

Concert E \flat Scale and Arpeggio *Key of B \flat*

Slow and expressive, legato in style

p *ten.* *ten.*

9 Faster, with movement *(p)*

13

17 *mp* **22** *f*

26 *(f)*

allargando **31** Slightly broader *mf* *f*

37 Slower, gently *p* *rall.*

A CHILDHOOD HYMN

1st TROMBONE

David R. Holsinger
(ASCAP)

Concert B \flat Scale
and Arpeggio

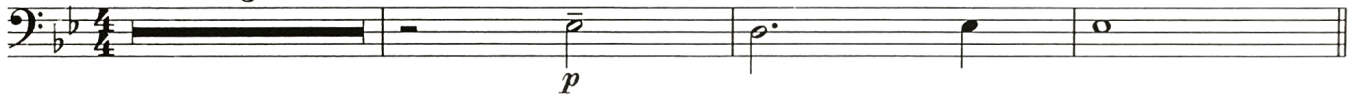


Concert E \flat Scale
and Arpeggio



Slow and expressive, legato in style

5



9 Faster, with movement

13

3



17



22

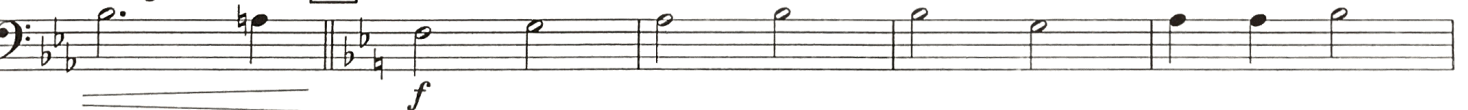


26



allargando

31 Slightly broader



37 Slower, gently

4



Any reproduction, adaptation or arrangement of this work in whole or in part without the consent of the copyright owner constitutes an infringement of copyright.

© Copyright 1991 by Wingert-Jones Music, Inc. Kansas City, MO 64137

International Copyright Secured Made in U.S.A. All Rights Reserved.

A CHILDHOOD HYMN

2nd TROMBONE

David R. Holsinger
(ASCAP)

Concert Bb Scale and Arpeggio

Key of Bb



Concert Eb Scale and Arpeggio

Key of Eb

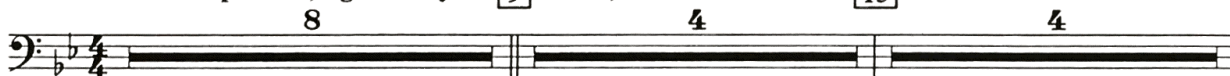


Slow and expressive, legato in style

9

Faster, with movement

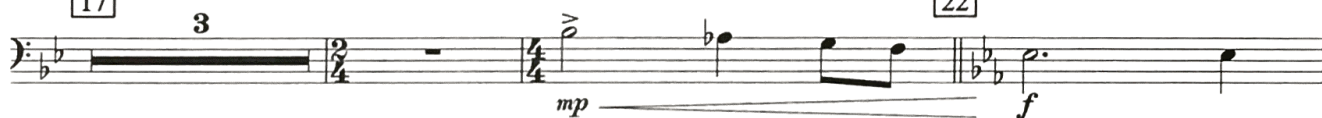
13



17

3

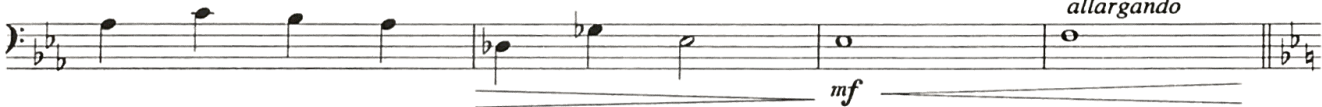
22



26



allargando

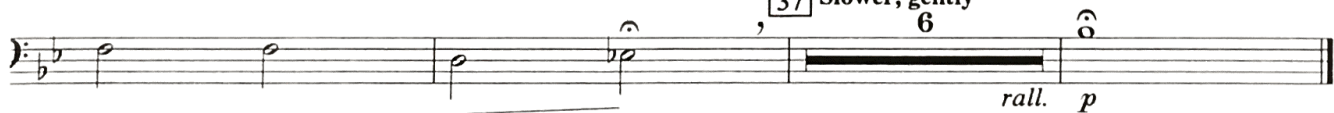


31 Slightly broader



37 Slower, gently

6



Any reproduction, adaptation or arrangement of this work in whole or in part without the consent of the copyright owner constitutes an infringement of copyright.

© Copyright 1991 by Wingert-Jones Music, Inc. Kansas City, MO 64137

International Copyright Secured Made in U.S.A. All Rights Reserved.

A CHILDHOOD HYMN

BARITONE B.C.

David R. Holsinger
(ASCAP)

Concert B \flat Scale and Arpeggio *Key of B \flat*

Concert E \flat Scale and Arpeggio *Key of E \flat*

Slow and expressive, legato in style

5

p

9 Faster, with movement

13

p

17

22

f

26

allargando

31 Slightly broader

mf *f*

37 Slower, gently

p

rall.

Any reproduction, adaptation or arrangement of this work in whole or in part without the consent of the copyright owner constitutes an infringement of copyright.

© Copyright 1991 by Wingert-Jones Music, Inc. Kansas City, MO 64137

International Copyright Secured Made in U.S.A. All Rights Reserved.

A CHILDHOOD HYMN

David R. Holsinger
(ASCAP)

TUBA

Concert B \flat Scale and Arpeggio *Key of B \flat*



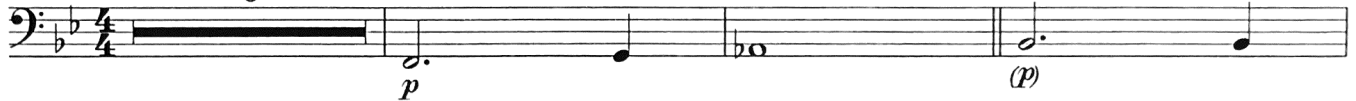
Concert E \flat Scale and Arpeggio *Key of E \flat*



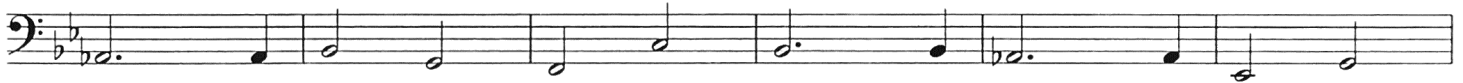
Slow and expressive, legato in style

6

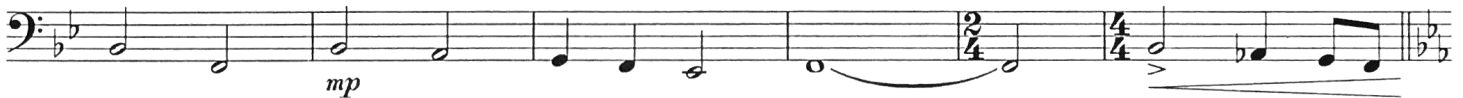
9 Faster, with movement



13

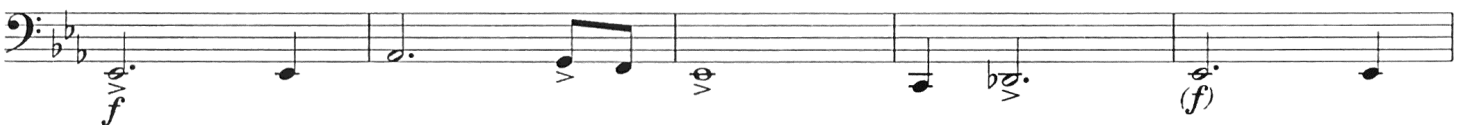


17



22

26




allargando

31 Slightly broader



37 Slower, gently



Any reproduction, adaptation or arrangement of this work in whole or in part without the consent of the copyright owner constitutes an infringement of copyright.

© Copyright 1991 by Wingert-Jones Music, Inc. Kansas City, MO 64137

International Copyright Secured Made in U.S.A. All Rights Reserved.

A CHILDHOOD HYMN

BELLS

David R. Holsinger
(ASCAP)

Concert B \flat Scale and Arpeggio

Key of B \flat

Concert E \flat Scale and Arpeggio

Key of E \flat

Slow and expressive, legato in style 8 9 Faster, with movement 13

mp

17

(mp)

22 26

mf *f*

31 Slightly broader

allargando

37 Slower, gently

rall.

Any reproduction, adaptation or arrangement of this work in whole or in part without the consent of the copyright owner constitutes an infringement of copyright.

© Copyright 1991 by Wingert-Jones Music, Inc. Kansas City, MO 64137

International Copyright Secured Made in U.S.A. All Rights Reserved.

A CHILDHOOD HYMN

David R. Holsinger
(ASCAP)

IMPANI

Concert Bb Scale and Arpeggio

Key of Bb



Musical notation for the Concert Bb Scale and Arpeggio in the key of Bb. It consists of a single staff with a bass clef and a common time signature. The scale is written in eighth notes, and the arpeggio is written in quarter notes.

Concert Eb Scale and Arpeggio

Key of Eb

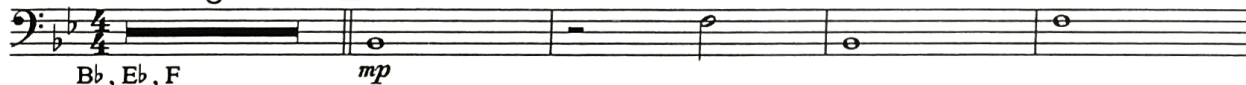


Musical notation for the Concert Eb Scale and Arpeggio in the key of Eb. It consists of a single staff with a bass clef and a common time signature. The scale is written in eighth notes, and the arpeggio is written in quarter notes.

Slow and expressive,
legato in style

8

9 Faster, with movement



Musical notation for measures 8 and 9. Measure 8 is marked with a fermata and the dynamic *mp*. Measure 9 is marked with a fermata and the dynamic *mp*. The notes are Bb, Eb, and F.

13

17



Musical notation for measures 13 through 17. Measures 13 and 17 are marked with a fermata and the dynamic *(mp)*.

22



Musical notation for measure 22, marked with a fermata and the dynamic *f*.

26

3

allargando

31 Slightly broader



Musical notation for measures 26 through 31. Measure 26 is marked with a fermata and the dynamic *mf*. Measure 31 is marked with a fermata and the dynamic *f*. The section is marked *allargando*.

37 Slower, gently



Musical notation for measures 37 through 40. Measure 37 is marked with a fermata and the dynamic *f*. Measure 40 is marked with a fermata and the dynamic *p*. The section is marked *L.V.*



Musical notation for measures 41 through 44. Measure 44 is marked with a fermata and the dynamic *rall.*

Any reproduction, adaptation or arrangement of this work in whole or in part without the consent of the copyright owner constitutes an infringement of copyright.

© Copyright 1991 by Wingert-Jones Music, Inc. Kansas City, MO 64137

International Copyright Secured Made in U.S.A. All Rights Reserved.

A CHILDHOOD HYMN

SUSPENDED CYMBAL
BASS DRUM

David R. Holsinger
(ASCAP)

(Concert Eb Scale and Arpeggio)

(Concert Eb Scale and Arpeggio)

Slow and expressive, legato in style **9 Faster, with movement**

Sus. Cym. **4/4** 7 pp mp L. V. 3 13 4

Bass Dr. **4/4** soft mallets B. D.

17 3 2/4 4/4 p f L. V. 22 p

26 f L. V. p f L. V. mf L. V.

31 allargando p f L. V. 31 Slightly broader

37 p f choke 6 37 Slower, gently rall.

A CHILDHOOD HYMN

SMALL TRIANGLE

David R. Holsinger
(ASCAP)

(Concert B \flat Scale and Arpeggio) C

(Concert B \flat Scale and Arpeggio) C

Slow and expressive,
legato in style

8

9 Faster, with movement

$\frac{4}{4}$ p

13

$\frac{4}{4}$

17

mp $\frac{2}{4}$ $\frac{4}{4}$

22

26

mf f *allargando*

31 Slightly broader

f

37 Slower, gently

p $rall.$

Any reproduction, adaptation or arrangement of this work in whole or in part without the consent of the copyright owner constitutes an infringement of copyright.

© Copyright 1991 by Wingert-Jones Music, Inc. Kansas City, MO 64137
International Copyright Secured Made in U.S.A. All Rights Reserved.